

Datasheet for ABIN5854531 **S100B Protein (AA 1-92)**

[Go to Product page](#)

1 Image

Overview

Quantity:	100 µg
Target:	S100B
Protein Characteristics:	AA 1-92
Origin:	Human
Source:	Escherichia coli (E. coli)
Protein Type:	Recombinant
Application:	SDS-PAGE (SDS)

Product Details

Sequence:	MSELEKAMVA LIDVFHQYSG REGDKHKLKK SELKELINNE LSHFLEEIKE QEVDKVMET LDNDGDGECD FQEFMAFVAM VTTACHEFFE HE
Purity:	> 95 % by SDS - PAGE

Target Details

Target:	S100B
Alternative Name:	S100B (S100B Products)
Background:	S100B also known as protein S100-B. S100B is a protein of the S100 protein family. S100 proteins comprise a multigene family of EF-hand calcium binding proteins that engage in multiple functions in response to cellular stress. S100B protein has been implicated in oligodendrocyte progenitor cell (OPC) regeneration in response to demyelinating insult. Also, S100B and other members of S100 proteins are specifically interact with PP5-TPR and inhibited

Target Details

	the PP5-Hsp90 interaction. Recombinant Human S100B was expressed in E.coli and purified by using conventional chromatography techniques.
Molecular Weight:	10.7kDa (92aa)
NCBI Accession:	NP_006263
UniProt:	P04271
Pathways:	Regulation of Muscle Cell Differentiation , Positive Regulation of Immune Effector Process , Toll-Like Receptors Cascades , Regulation of long-term Neuronal Synaptic Plasticity , S100 Proteins

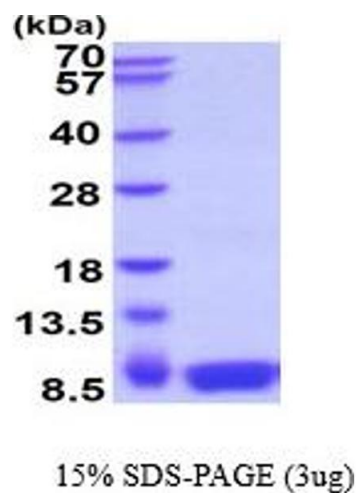
Application Details

Application Notes:	Optimal working dilution should be determined by the investigator.
Restrictions:	For Research Use only

Handling

Format:	Liquid
Concentration:	1 mg/mL
Buffer:	Liquid. In Phosphate Buffered Saline (pH 7.4) containing 10 % glycerol
Storage:	4 °C,-20 °C,-80 °C
Storage Comment:	Can be stored at +4C short term (1-2 weeks). For long term storage, aliquot and store at -20C or -70C. Avoid repeated freezing and thawing cycles.

Images



SDS-PAGE

Image 1.