

Datasheet for ABIN5854541
CTSA Protein (AA 24-474) (His tag)



[Go to Product page](#)

1 Image

Overview

Quantity:	50 µg
Target:	CTSA
Protein Characteristics:	AA 24-474
Origin:	Mouse
Source:	Baculovirus infected Insect Cells
Protein Type:	Recombinant
Purification tag / Conjugate:	This CTSA protein is labelled with His tag.
Application:	SDS-PAGE (SDS)

Product Details

Sequence:	APDQDEIDCL PGLAKQPSFR QYSGYLRA SD SKHFHYWFVE SQNDPKNSPV VLWLN GGP GC SSLDG LLTEH GPFLIQPDGV TLEYNPYAWN LIANVLYIES PAGVGFSYS D DKMYVTNDTE VAENNYEALK DFFRLFPEYK DNKLFLTGES YAGIYIPTLA VLVMQDPSMN LQGLAVGNGL ASYEQNDNSL VYFAYYHGLL GNRLWTS LQT HCCAQNKCNF YDNKDPECVN NLLEVS RIVG KSGLN IYNLY APCAGGVPGR HRYEDTLVVQ DFGNIFTRLP LKRRFPEALM RSGDKVRLDP PCTNTTAPSN YLNNPYVRKA LHIPESLPRW DMCNFLVNLQ YRRLYQSMNS QYLKLLSSQK YQILLYNGDV DMACNFMGDE WFDVSLN QKM EVQRRPWLVD YGESGEQVAG FVKEC SHITF LTIKGAGHMV PTDKPRAAFT MFSRFLNKEP YVEHHHHHHH
Purity:	> 90 % by SDS - PAGE
Endotoxin Level:	< 1.0 EU per 1 microgram of protein (determined by LAL method)

Target Details

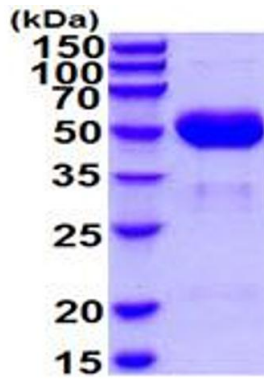
Target:	CTSA
Alternative Name:	Ctsa (CTSA Products)
Background:	CTSA, also known as lysosomal protective protein isoform b, is a component of the lysosomal multienzyme complex along with beta-galactosidase and sialidase Neu1. It is a multicatalytic enzyme with deamidase and esterase in addition to carboxypeptidase activities. Recombinant mouse CTSA, fused to His-tag at C-terminus, was expressed in insect cell and purified by using conventional chromatography techniques.
Molecular Weight:	52.4kDa (459aa) 50-70kDa (SDS-PAGE under reducing conditions)
NCBI Accession:	NP_001033581
UniProt:	P16675

Application Details

Application Notes:	Optimal working dilution should be determined by the investigator.
Restrictions:	For Research Use only

Handling

Format:	Liquid
Concentration:	0.5 mg/mL
Buffer:	Liquid. In Phosphate Buffered Saline (pH 7.4) containing 10 % glycerol.
Storage:	4 °C,-20 °C,-80 °C
Storage Comment:	Can be stored at +4C short term (1-2 weeks). For long term storage, aliquot and store at -20C or -70C. Avoid repeated freezing and thawing cycles.



15% SDS-PAGE (3ug)

SDS-PAGE

Image 1.