

Datasheet for ABIN5854562
CD55 Protein (AA 35-362) (His tag)



[Go to Product page](#)

1 Image

Overview

Quantity:	50 µg
Target:	CD55
Protein Characteristics:	AA 35-362
Origin:	Mouse
Source:	Baculovirus infected Insect Cells
Protein Type:	Recombinant
Purification tag / Conjugate:	This CD55 protein is labelled with His tag.
Application:	SDS-PAGE (SDS)

Product Details

Sequence:	DCGPPPDIPN ARPILGRHSK FAEQSKVAYS CNNGFKQVPD KSNIVVCLEN GQWSSHETFC EKSCVAPERL SFASLKKEYL NMNFFPVGTI VEYECRPGFR KQPPLPGKAT CLEDLVWSPV AQFCKKKSCP NPKDLDNHGI NIPTGILFGS EINFSCNPGY RLVGVSSTFC SVTGNTVDWD DEFPVCTEIH CPEPPKINNG IMRGESDSYT YSQVVTYSCD KGFILVGNAS IYCTVSKSDV GQWSSPPPRC IEKSKVPTKK PTINVPSTGT PSTPQKPTTE SVPNPGDQPT PQKPSTVKVS ATQHVPVTKT TVRHPIRTST DKGEPNTGLE HHHHHH
Purity:	> 95 % by SDS - PAGE
Endotoxin Level:	< 1.0 EU per 1 microgram of protein (determined by LAL method)

Target Details

Target:	CD55
---------	------

Target Details

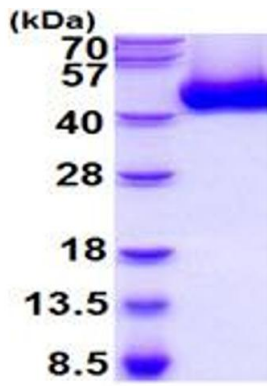
Alternative Name:	Cd55 (CD55 Products)
Background:	CD55, also known as Complement decay-accelerating factor, GPI-anchored, is a member of the RCA(regulators of complement activation) family characterized by four to 30 SCRs(short consensus repeats) in their plasma-exposed regions. It is physiologically acting as an inhibitor of the complement system, but is also broadly expressed in malignant tumours. Recombinant mouse CD55, fused to His-tag at C-terminus, was expressed in insect cell and purified by using conventional chromatography techniques.
Molecular Weight:	36.8kDa (336aa) 40-57kDa (SDS-PAGE under reducing conditions)
NCBI Accession:	NP_034146
UniProt:	Q61475
Pathways:	Complement System, Regulation of Leukocyte Mediated Immunity

Application Details

Application Notes:	Optimal working dilution should be determined by the investigator.
Restrictions:	For Research Use only

Handling

Format:	Liquid
Concentration:	0.5 mg/mL
Buffer:	Liquid. In Phosphate Buffered Saline (pH 7.4) containing 10 % glycerol.
Storage:	4 °C,-20 °C,-80 °C
Storage Comment:	Can be stored at +4C short term (1-2 weeks). For long term storage, aliquot and store at -20C or -70C. Avoid repeated freezing and thawing cycles.



15% SDS-PAGE (3ug)

SDS-PAGE

Image 1.