



[Go to Product page](#)

Datasheet for ABIN5854578

## Cathepsin S Protein (CTSS) (AA 21-340) (His tag)

### 1 Image

#### Overview

Quantity:	50 µg
Target:	Cathepsin S (CTSS)
Protein Characteristics:	AA 21-340
Origin:	Mouse
Source:	Baculovirus infected Insect Cells
Protein Type:	Recombinant
Purification tag / Conjugate:	This Cathepsin S protein is labelled with His tag.
Application:	SDS-PAGE (SDS)

#### Product Details

Sequence:	VAMEQLQRDP TLDYHWDLWK KTHEKEYKDK NEEVRRLIW EKNLKFIMIH NLEYSMGMHT YQVGMNDMGD MTNEEISCRM GALRISRQSP KTVTFRSYSN RPLPDTVDWR EKGCVTEVKY QGSCGACWAF SAVGALEGQL KLKTGKLISL SAQNLVDCSN EEKYGNKGC GGYMTEAFQY IIDNGGIEAD ASYPYKAMDE KCHYNSKNRA ATCSRYIQLP FGDEDALKEA VATKGPVSVG IDASHSSFFF YKSGVYDDPS CTGNVNHGVL VVG YGTLDGK DYWLKNSWG LNF GDQGYIR MARNKNHCG IASYCSYPEI LEHHHHHHDY WLKNSWGLN FGDQGYIRMA RNNKNHCGIA SYCSYPEILE HHHHHH
Purity:	> 90 % by SDS - PAGE
Endotoxin Level:	< 1.0 EU per 1 microgram of protein (determined by LAL method)

## Target Details

---

Target:	Cathepsin S (CTSS)
Alternative Name:	Ctss ( <a href="#">CTSS Products</a> )
Background:	<p>Ctss, as known as cathepsin S isoform 2, is a lysosomal cysteine protease of the papain family. This protein plays a major role in the processing of the MHC class II-associated invariant chain. It has been implicated in the pathogenesis of several diseases such as Alzheimer's disease and degenerative disorders associated with the cells of the mononuclear phagocytic system. Also, it is less abundant in tissues than Cathepsins B, L and H. The highest levels of this protein have been found in lymph nodes, spleen and phagocytic cells. Recombinant mouse Ctss, fused to His-tag at C-terminus, was expressed in insect cell and purified by using conventional chromatography techniques.</p>
Molecular Weight:	37.2kDa (328aa) 28-40kDa (SDS-PAGE under reducing conditions)
NCBI Accession:	<a href="#">NP_067256</a>
UniProt:	<a href="#">O70370</a>
Pathways:	<a href="#">Activation of Innate immune Response</a> , <a href="#">Toll-Like Receptors Cascades</a>

## Application Details

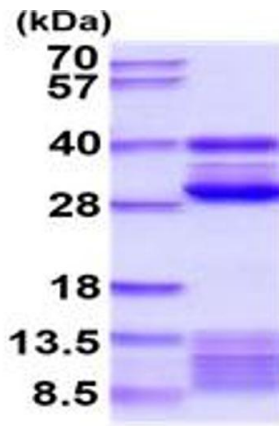
---

Application Notes:	Optimal working dilution should be determined by the investigator.
Restrictions:	For Research Use only

## Handling

---

Format:	Liquid
Concentration:	0.5 mg/mL
Buffer:	Liquid. In Phosphate Buffered Saline ( pH 7.4) containing 10 % glycerol.
Storage:	4 °C,-20 °C,-80 °C
Storage Comment:	Can be stored at +4C short term (1-2 weeks). For long term storage, aliquot and store at -20C or -70C. Avoid repeated freezing and thawing cycles.



15% SDS-PAGE (3ug)

**SDS-PAGE**

Image 1.