

Datasheet for ABIN5854589  
**PSMA Protein (AA 45-752) (His tag)**



[Go to Product page](#)

1 Image

## Overview

Quantity:	50 µg
Target:	PSMA (FOLH1)
Protein Characteristics:	AA 45-752
Origin:	Mouse
Source:	Baculovirus infected Insect Cells
Protein Type:	Recombinant
Purification tag / Conjugate:	This PSMA protein is labelled with His tag.
Application:	SDS-PAGE (SDS)

## Product Details

Sequence:	ADPKPSNEAT GNVSHSGMKK EFLHELKAEN IKKFLYNFTR TPHLAGTQNN FELAKQIHDQ WKEFGLDLVE LSHYDVLLSY PNKTHPNYIS IINEDGNEIF KTSLSSEQPPP GYENISDVVP PYSAFSPQGT PEGDLVYVNY ARTEDFFKLE REMKISCSGK IVIARYGKVF RGNMVKNAQL AGAKGMILYS DPADYFVPAV KSYPDGWNLP GGGVQRGNVL NLNGAGDPLT PGYPANEHAY RHELTNAVGL PSIPVHPIGY DDAQKLEEHM GGPAPPDSSW KGGLKVPYNV GPGFAGNFST QKVKMHIHSY TKVTRIYNVI GTLKGALPD RYVILGGHRD AWWVGGIDPQ SGAAVVHEIV RSFGTLKKKG RRRRTILFA SWDAEEFGLL GSTEWAEHHS RLLQERGVAY INADSSIEGN YTLRVDCTPL MYSLVYNLTK ELQSPDEGFE GKSLYDSWKE KSPSPEFIGM PRISKLGSGN DFEVFFQRLG IASGRARYTK NWKTNKVSSY PLYHSVYETY ELVVKFYDPT FKYHLTVAQV RGAMVFELAN SIVLPFDCQS YAVALKKYAD TIYNISMKHP QEMKAYMISF DSLFSAVNNF TDVASKFNQR LQELDKSNPI LLRIMNDQLM YLERAFIDPL GLPGRPFYRH IYAPSSHNK YAGESFPGIY DALFDISSKV NASKAWNEVK RQISIATFTV QAAAETLREV AHHHHHHH
-----------	--

## Product Details

---

Purity:	> 85 % by SDS - PAGE
Endotoxin Level:	< 1.0 EU per 1 microgram of protein (determined by LAL method)

## Target Details

---

Target:	PSMA (FOLH1)
Alternative Name:	Folh1 ( <a href="#">FOLH1 Products</a> )
Background:	<p>Folh1, as known as glutamate carboxypeptidase 2, is a single pass type 2 membrane protein which belongs to the peptidase M28 family and M28B subfamily. This protein is most highly expressed in prostate epithelium. It is detected in urinary bladder, kidney, testis, ovary, live, stomach, small intestine colon, and the capillary endothelium of a variety of tumors. Thus, it shows a promising role in directed imaging and therapy of recurrent of metastatic disease. Recombinant mouse Folh1, fused to His-tag at C-terminus, was expressed in insect cell and purified by using conventional chromatography techniques.</p>
Molecular Weight:	80.5kDa (717aa) 70-100kDa (SDS-PAGE under reducing conditions)
NCBI Accession:	<a href="#">NP_058050</a>
UniProt:	<a href="#">O35409</a>

## Application Details

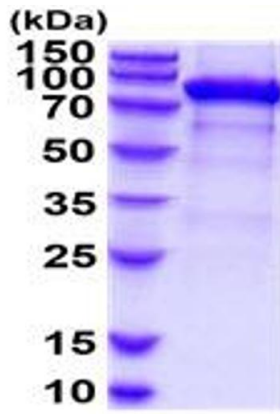
---

Application Notes:	Optimal working dilution should be determined by the investigator.
Restrictions:	For Research Use only

## Handling

---

Format:	Liquid
Concentration:	0.5 mg/mL
Buffer:	Liquid. In Phosphate Buffered Saline ( pH 7.4) containing 10 % glycerol.
Storage:	4 °C,-20 °C,-80 °C
Storage Comment:	Can be stored at +4C short term (1-2 weeks). For long term storage, aliquot and store at -20C or -70C. Avoid repeated freezing and thawing cycles.



15% SDS-PAGE (3ug)

**SDS-PAGE**

Image 1.