

Datasheet for ABIN5854679  
**FGFR4 Protein (AA 22-369) (His tag)**



[Go to Product page](#)

1 Image

## Overview

Quantity:	50 µg
Target:	FGFR4
Protein Characteristics:	AA 22-369
Origin:	Human
Source:	Baculovirus infected Insect Cells
Protein Type:	Recombinant
Purification tag / Conjugate:	This FGFR4 protein is labelled with His tag.
Application:	SDS-PAGE (SDS)

## Product Details

Sequence:	ADPGITNINC SGHIWVEPAT IFKMGMNISI YCQAAIKNCQ PRKLHFYKNG IKERFQITRI NKTTARLWYK NFLEPHASMY CTAECPKHFQ ETLICGKDIS SGYPPDIPDE VTCVIYEYSG NMTCTWNAGK LTYIDTKYVW HVKSLETEEE QQYLTSYIN ISTDSLQGGK KYLVWVQAAN ALGMEESKQL QIHLDDIVIP SAAVISRAET INATVPKTII YWDSQTTIEK VSCEMRYKAT TNQTNVKEF DTNFTYVQQS EFYLEPNIKY VFQVRCQETG KRYWQPWSSL FFHKTPETVP QVTSKAFQHD TWNSGLTVAS ISTGHILSDN RGDIGLEPKS CDKTHTCPPE PPELLGGPS VFLFPPKPKD TLMISRTPEV TCVVDVSHE DPEVKFNWYV DGVEVHNAKT KPREEQYNST YRVVSVLTVL HQDWLNGKEY KCKVSNKALP APIEKTISKA KGQPREPQVY TLPPSRDEL KNQVSLTCLV KGFYPSDIAV EWESNGOPEN NYKTTTPVLD SDGSFFLYSK LTVDKSRWQQ GNVFSCSVMH EALHNHYTQK SLSLSPGKHH HHHH
Purity:	> 90 % by SDS - PAGE
Endotoxin Level:	< 1.0 EU per 1 microgram of protein (determined by LAL method)

## Target Details

---

Target:	FGFR4
Alternative Name:	FGFR4 ( <a href="#">FGFR4 Products</a> )
Background:	IL23R, also known as interleukin-23 receptor, belongs to the type I cytokine receptor family, Type 2 subfamily. It contains 2 fibronectin type-III domains and is expressed by monocytes, Th1, Th0, NK and dendritic cells. It may be responsible for autoimmune inflammatory diseases and be important for tumorigenesis. Recombinant human IL23R, fused to hIgG-His-tag at C-terminus, was expressed in insect cell and purified by using conventional chromatography techniques.
Molecular Weight:	65.3kDa (574aa) 70-100kDa (SDS-PAGE under reducing conditions)
NCBI Accession:	<a href="#">NP_653302</a>
UniProt:	<a href="#">Q5VWK5</a>
Pathways:	<a href="#">RTK Signaling</a> , <a href="#">Fc-epsilon Receptor Signaling Pathway</a> , <a href="#">EGFR Signaling Pathway</a> , <a href="#">Neurotrophin Signaling Pathway</a> , <a href="#">Carbohydrate Homeostasis</a> , <a href="#">Growth Factor Binding</a>

## Application Details

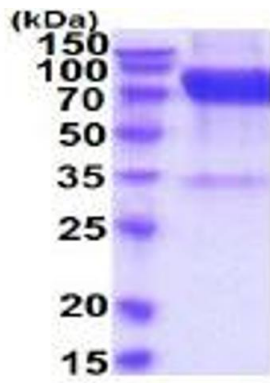
---

Application Notes:	Optimal working dilution should be determined by the investigator.
Restrictions:	For Research Use only

## Handling

---

Format:	Liquid
Concentration:	0.25 mg/mL
Buffer:	Liquid. In Phosphate Buffered Saline ( pH 7.4) containing 10 % glycerol.
Storage:	4 °C,-20 °C,-80 °C
Storage Comment:	Can be stored at +4C short term (1-2 weeks). For long term storage, aliquot and store at -20C or -70C. Avoid repeated freezing and thawing cycles.



15% SDS-PAGE (3ug)

### SDS-PAGE

Image 1.