

Datasheet for ABIN5854751
CRLF2 Protein (AA 23-231) (His tag)



[Go to Product page](#)

1 Image

Overview

Quantity:	50 µg
Target:	CRLF2
Protein Characteristics:	AA 23-231
Origin:	Human
Source:	Baculovirus infected Insect Cells
Protein Type:	Recombinant
Purification tag / Conjugate:	This CRLF2 protein is labelled with His tag.
Application:	SDS-PAGE (SDS)

Product Details

Sequence:	ADPQGGAAEG VQIQIIFYNL ETVQVTWNAS KYSRTNLTFH YRFNGDEAYD QCTNYLLQEG HTSGCLLDAE QRDDILYFSI RNGTHPVFTA SRWMVYYLKP SSPKHVRFWS HQDAVTVTCS DLSYGDLLYE VQYRSPFDE WQSKQENTCN VTIEGLDAEK CYSFWVRVKA MEDVYGPDTY PSDWSEVTCW QRGEIRDACA ETPTPPKPKL SKHHHHHH
Purity:	> 95 % by SDS - PAGE
Endotoxin Level:	< 1.0 EU per 1 microgram of protein (determined by LAL method)

Target Details

Target:	CRLF2
Alternative Name:	CRLF2 (CRLF2 Products)
Background:	CRLF2, also known as cytokine receptor-like factor 2 isoform 1, is a receptor for thymic stromal

Target Details

lymphopoietin. It is proposed to signal through a heterodimeric receptor complex that consists of a new member of the hemopoietin family termed CRLF2 and the IL-7R alpha-chain. The protein induces phosphorylation of Stat3 and Stat5 also activate JAK2 pathways. CRLF2 and IL-7R alpha are principally coexpressed on monocytes and dendritic cell populations and to a much lesser extent of various lymphoid cells. Recombinant human CRLF2, fused to His-tag at C-terminus, was expressed in insect cell and purified by using conventional chromatography techniques.

Molecular Weight:	25.2kDa (218aa) 28-40KDa (SDS-PAGE under reducing conditions.)
-------------------	--

NCBI Accession:	NP_071431
-----------------	---------------------------

UniProt:	Q9HC73
----------	------------------------

Application Details

Application Notes:	Optimal working dilution should be determined by the investigator.
--------------------	--

Restrictions:	For Research Use only
---------------	-----------------------

Handling

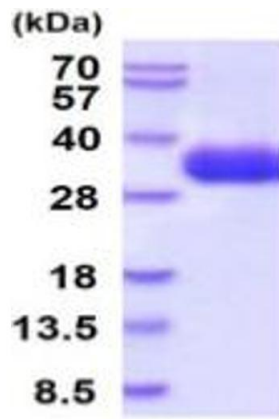
Format:	Liquid
---------	--------

Concentration:	1 mg/mL
----------------	---------

Buffer:	Liquid. In Phosphate Buffered Saline (pH 7.4) containing 10 % glycerol.
---------	--

Storage:	4 °C,-20 °C,-80 °C
----------	--------------------

Storage Comment:	Can be stored at +4C short term (1-2 weeks). For long term storage, aliquot and store at -20C or -70C. Avoid repeated freezing and thawing cycles.
------------------	--



15% SDS-PAGE (3ug)

SDS-PAGE

Image 1.