

Datasheet for ABIN5854767

Cathepsin D Protein (CTSD) (AA 21-410) (His tag)



[Go to Product page](#)

1 Image

Overview

| | |
|-------------------------------|--|
| Quantity: | 5 µg |
| Target: | Cathepsin D (CTSD) |
| Protein Characteristics: | AA 21-410 |
| Origin: | Mouse |
| Source: | Baculovirus infected Insect Cells |
| Protein Type: | Recombinant |
| Biological Activity: | Active |
| Purification tag / Conjugate: | This Cathepsin D protein is labelled with His tag. |
| Application: | SDS-PAGE (SDS), Enzyme Activity Assay (EAA) |

Product Details

| | |
|------------------------------|---|
| Sequence: | <p>IIRIPLRKFT SIRRTMTEVG GSVEDLILKG PITKYSMQSS PKTTEPVSEL LKNYLDAQYY</p> <p>GDIGIGTPPQ CFTVVFDTS SNLWVPSIHC KILDIACWVH HKYNSDKSST YVKNGTSTFDI</p> <p>HYGSGSLSGY LSQDTVSVPC KSDQSKARGI KVEKQIFGEA TKQPQIVFVA AKFDGILGMG</p> <p>YPHISVNNVL PVFDNLMQQK LVDKNIFSFY LNRDPEGQPG GELMLGGTDS KYHGHGELSYL</p> <p>NVTRKAYWQV HMDQLEVGNE LTLCGGGCEA IVDTGTSLLV GPVEEVKELQ KAIGAVPLIQ</p> <p>GEYMIPCEKV SSLPTVYLKL GGKNYELHPD KYILKVSQGG KTICLSGFMG MDIPPPSGPL</p> <p>WILGDVFIGS YYTVFDRDNN RVGFANAVVL LEHHHHHH</p> |
| Purity: | > 90% by SDS-PAGE |
| Endotoxin Level: | < 1 EU per 1ug of protein (determined by LAL method) |
| Biological Activity Comment: | Specific activity is > 1,000pmol/min/ug in which one unit will convert 1.0pmole of Mca-PLGL- |

Product Details

Dpa-AR-NH2 to MCA- Pro-Leu-OH per minute at pH 3.5 at 25C.

Target Details

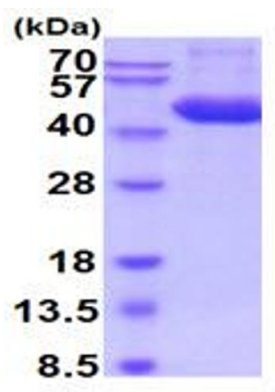
| | |
|-------------------|---|
| Target: | Cathepsin D (CTSD) |
| Alternative Name: | Cathepsin D (CTSD Products) |
| Background: | Ctsd, also known as cathepsin D, is peptidase belonging to the family of aspartic peptidases. It is intracellular catabolism in lysosomal compartments, other physiological effect include hormone and antigen processing. It plays an important role in alpha-synuclein degradation, and neuronal survival. It has also been shown to mediate apoptosis induced by various stimuli and p53-dependent tumor suppression. Recombinant mouse Ctsd, fused to His-tag at C-terminus, was expressed in insect cell and purified by using conventional chromatography techniques. |
| Molecular Weight: | 44 kDa (398aa) |
| NCBI Accession: | NP_034113 |
| UniProt: | P18242 |
| Pathways: | Peptide Hormone Metabolism |

Application Details

| | |
|--------------------|--|
| Application Notes: | Optimal working dilution should be determined by the investigator. |
| Comment: | Bioactivity Validated |
| Restrictions: | For Research Use only |

Handling

| | |
|------------------|---|
| Format: | Liquid |
| Concentration: | 0.25 mg/mL |
| Buffer: | Liquid. In Phosphate Buffered Saline (pH 7.4) containing 10 % glycerol. |
| Storage: | 4 °C,-20 °C,-80 °C |
| Storage Comment: | Can be stored at +2°C to +8°C for 1 week. For long term storage, aliquot and store at -20°C to -80°C. Avoid repeated freezing and thawing cycles. |



15% SDS-PAGE (3ug)

| SDS-PAGE |
|----------|
| Image 1. |