

Datasheet for ABIN5854788

Interferon gamma Protein (IFNG) (AA 24-167) (His tag)



[Go to Product page](#)

1 Image

Overview

Quantity:	50 µg
Target:	Interferon gamma (IFNG)
Protein Characteristics:	AA 24-167
Origin:	Cat
Source:	Escherichia coli (E. coli)
Protein Type:	Recombinant
Purification tag / Conjugate:	This Interferon gamma protein is labelled with His tag.
Application:	SDS-PAGE (SDS)

Product Details

Sequence:	MGSSHHHHHH SSSLVPRGSH MGSQAMFFKE IEELKGYFNA SNPDVADGGS LFVDILKNWK EESDKTIIQS QIVSFYLMKF ENLKDDDQRI QRSMDTIKED MLDKLLNTSS SKRDDFLKLI QIPVNDLQVQ RKAINELFKV MNDLSPRSNL RKRKRSQNLF RGRRASK
Purity:	> 95% by SDS-PAGE

Target Details

Target:	Interferon gamma (IFNG)
Alternative Name:	IFN-gamma/IFNG (IFNG Products)
Background:	Interferon gamma, also known as IFNG, is a member of the type II interferon family. This protein is a soluble cytokine with antiviral, immunoregulatory and anti-tumor properties and is a potent activator of macrophages. Mutations in this gene are associated with aplastic anemia.

Target Details

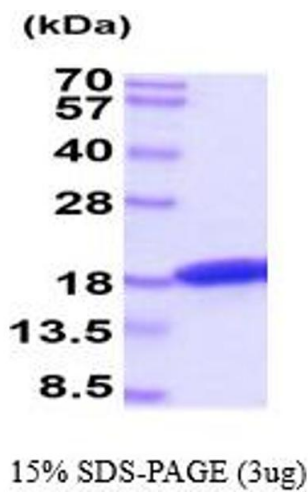
	Recombinant Feline IFNG protein, fused to His-tag at N-terminus, was expressed in E. coli and purified by using conventional chromatography techniques.
Molecular Weight:	19.3 kDa (167aa) confirmed by MALDI-TOF
NCBI Accession:	NP_001009873
UniProt:	P46402
Pathways:	Interferon-gamma Pathway , Cellular Response to Molecule of Bacterial Origin , Regulation of Leukocyte Mediated Immunity , Positive Regulation of Immune Effector Process , Production of Molecular Mediator of Immune Response , ER-Nucleus Signaling , Regulation of Carbohydrate Metabolic Process , Protein targeting to Nucleus , Autophagy

Application Details

Application Notes:	Optimal working dilution should be determined by the investigator.
Restrictions:	For Research Use only

Handling

Format:	Liquid
Concentration:	1 mg/mL
Buffer:	Liquid. In PBS buffer (pH 7.4) containing 10 % glycerol
Storage:	4 °C,-20 °C,-80 °C
Storage Comment:	Can be stored at +2°C to +8°C for 1 week. For long term storage, aliquot and store at -20°C to -80°C. Avoid repeated freezing and thawing cycles.



SDS-PAGE
Image 1.