

Datasheet for ABIN5854797

CREG1 Protein (AA 32-220) (His tag)[Go to Product page](#)**1** Image

Overview

Quantity:	100 µg
Target:	CREG1
Protein Characteristics:	AA 32-220
Origin:	Human
Source:	Escherichia coli (E. coli)
Protein Type:	Recombinant
Purification tag / Conjugate:	This CREG1 protein is labelled with His tag.
Application:	SDS-PAGE (SDS)

Product Details

Sequence:	MGSSHHHHHH SSSLVPRGSH MGSMRGGRDH GDWDVDRRLP PLPPREDGPR VARFVTHVSD WGSLATISTI KEVRGWPFAD IISISDGPPG EGTGEPYMYL SPLQQAVSDL QENPEATLTM SLAQTVYCRN HGFDPQSPLC VHIMMSGTVT KVNKTEEDYA RDSLFVRHPE MKHWPSSHNV FFAKLKISRI WLDYFGGPK VVTPEEYFNV TLQ
Purity:	> 95 % by SDS-PAGE

Target Details

Target:	CREG1
Alternative Name:	Creg1 (CREG1 Products)
Background:	Creg1, also known as Cellular repressor of E1A-stimulated genes1, was antagonizes transcriptional activation and cellular transformation by E1A. This protein both activates and

Target Details

represses gene expression to promote cellular proliferation and inhibit differentiation. Creg1 increases EC filopodia formation and vascular assembly via ILK-Cdc42 activation and promotes neovascularization, which might be a therapeutic target for ischemic injury. Recombinant mouse Creg1 protein, fused to His-tag at N-terminus, was expressed in E.coli and purified by using conventional chromatography techniques.

Molecular Weight: 24 kDa (213aa)

NCBI Accession: [NP_035934](#)

UniProt: [O88668](#)

Application Details

Application Notes: Optimal working dilution should be determined by the investigator.

Restrictions: For Research Use only

Handling

Format: Liquid

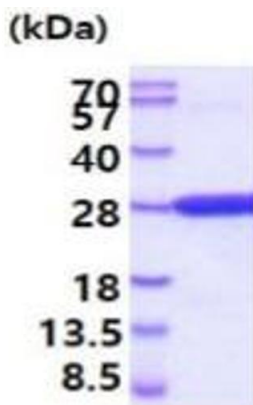
Concentration: 1 mg/mL

Buffer: Liquid. In 20 mM Tris-HCl(pH 8.0) containing 0.15M NaCl, 10 % glycerol

Storage: 4 °C,-20 °C,-80 °C

Storage Comment: Can be stored at +4C short term (1-2 weeks). For long term storage, aliquot and store at -20C or -70C. Avoid repeated freezing and thawing cycles.

Images



15% SDS-PAGE (3ug)

SDS-PAGE

Image 1.