

Datasheet for ABIN5854810
SLAMF1 Protein (AA 21-237) (His tag)



[Go to Product page](#)

1 Image

Overview

Quantity:	50 µg
Target:	SLAMF1
Protein Characteristics:	AA 21-237
Origin:	Human
Source:	Baculovirus infected Insect Cells
Protein Type:	Recombinant
Purification tag / Conjugate:	This SLAMF1 protein is labelled with His tag.
Application:	SDS-PAGE (SDS)

Product Details

Sequence:	ADPASYGTGG RMMNCPKILR QLGSKVLLPL TYERINKSMN KSIHIVVTMA KLENLNVENK IVSLDPSEAG PPRYLGDYK FYLENLTLGI RESRKEDEGW YLMTLEKNVS VQRFCLQLRL YEQVSTPEIK VLNKTQENGT CTLILGCTVE KGDHVAYSWS EKAGTHPLNP ANSSHLLSLT LGPQHADNIY ICTVSNPISN NSQTFSPWPG CRTDPSETKP HHHHHH
Purity:	> 95 % by SDS - PAGE
Endotoxin Level:	< 1.0 EU per 1 microgram of protein (determined by LAL method)

Target Details

Target:	SLAMF1
Alternative Name:	SLAMF1 (SLAMF1 Products)
Background:	SLAMF1, also known as signaling lymphocytic activation molecule family member 1, is a cell

Target Details

surface sialylated phosphoglycoprotein and belongs to the CD2 subset of the Ig superfamily of type I transmembrane glycoproteins. This protein is constitutively expressed on peripheral blood memory T cells, T-cell clones, immature thymocytes, and a proportion of B cells, and is rapidly induced on naive T cells after activation. High-affinity for self-ligand is important in bidirectional T-cell to B-cell stimulation. Recombinant mouse SLAMF1 protein, fused to His-tag at C-terminus, was expressed in insect cell and purified by using conventional chromatography techniques.

Molecular Weight: 25.3kDa (226aa) 28-40kDa (SDS-PAGE under reducing conditions.)

NCBI Accession: [NP_003028](#)

UniProt: [Q13291](#)

Application Details

Application Notes: Optimal working dilution should be determined by the investigator.

Restrictions: For Research Use only

Handling

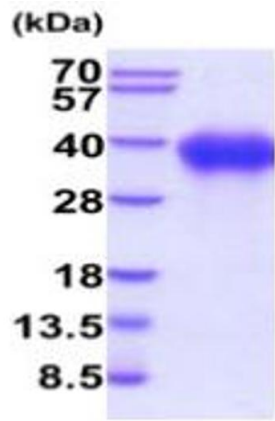
Format: Liquid

Concentration: 0.5 mg/mL

Buffer: Liquid. In Phosphate Buffered Saline (pH 7.4) containing 10 % glycerol.

Storage: 4 °C,-20 °C,-80 °C

Storage Comment: Can be stored at +4C short term (1-2 weeks). For long term storage, aliquot and store at -20C or -70C. Avoid repeated freezing and thawing cycles.



15% SDS-PAGE (3ug)

SDS-PAGE

Image 1.