

Datasheet for ABIN5854819

Chorionic Gonadotropin, beta Polypeptide 3 (CGB3) (AA 21-165) protein (His tag)



[Go to Product page](#)

1 Image

Overview

Quantity:	100 µg
Target:	Chorionic Gonadotropin, beta Polypeptide 3 (CGB3)
Protein Characteristics:	AA 21-165
Origin:	Human
Source:	Baculovirus infected Insect Cells
Protein Type:	Recombinant
Purification tag / Conjugate:	His tag
Application:	SDS-PAGE (SDS)

Product Details

Sequence:	ADPSKEPLRP RCRPINATLA VEKEGCPVCI TVNTTICAGY CPTMTRVLQG VLPALPQVVC NYRDVRFESI RLPGCPRGVN PVVSYAVALS CQCALCRRST TDCGGPKDHP LTCDDPRFQD SSSSKAPPPS LPSPSRLPGP SDTPILPQHH HHHH
Purity:	> 90 % by SDS - PAGE
Endotoxin Level:	< 1.0 EU per 1 microgram of protein (determined by LAL method)

Target Details

Target:	Chorionic Gonadotropin, beta Polypeptide 3 (CGB3)
Alternative Name:	CGB3 (CGB3 Products)
Background:	CGB3, also known as choriogonadotropin subunit beta, is a member of the glycoprotein hormone beta chain family and encodes the beta 3 subunit of chorionic gonadotropin (CG). It

Target Details

stimulates the expression of GCM1 target genes, including the fusogenic protein syncytin-1, to promote placental cell fusion. It synthesized in large quantities by the developing placenta, reaching peak concentrations in maternal blood during the late first trimester and early midtrimester of pregnancy. It is expressed exclusively by trophoblasts. It is an important biomarker in pregnancy and oncology, where it is routinely detected and quantified by specific immunoassays. Recombinant human CGB3, fused to His-tag at C-terminus, was expressed in insect cell and purified by using conventional chromatography techniques.

Molecular Weight: 16.6kDa (154aa) 18-28kDa (SDS-PAGE under reducing conditions)

NCBI Accession: [NP_000728](#)

UniProt: [P0DN86](#)

Application Details

Application Notes: Optimal working dilution should be determined by the investigator.

Restrictions: For Research Use only

Handling

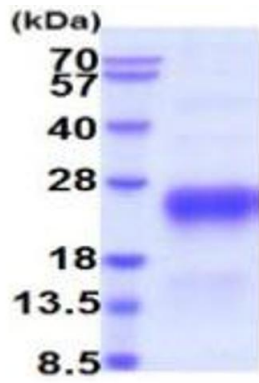
Format: Liquid

Concentration: 0.25 mg/mL

Buffer: Liquid. In Phosphate Buffered Saline (pH 7.4) containing 10 % glycerol.

Storage: 4 °C,-20 °C,-80 °C

Storage Comment: Can be stored at +4C short term (1-2 weeks). For long term storage, aliquot and store at -20C or -70C. Avoid repeated freezing and thawing cycles.



15% SDS-PAGE (3ug)

SDS-PAGE

Image 1.