

Datasheet for ABIN5854833

Complement Factor B Protein (CFB) (AA 26-259) (His tag)[Go to Product page](#)**1** Image

Overview

Quantity:	50 µg
Target:	Complement Factor B (CFB)
Protein Characteristics:	AA 26-259
Origin:	Human
Source:	Baculovirus infected Insect Cells
Protein Type:	Recombinant
Purification tag / Conjugate:	This Complement Factor B protein is labelled with His tag.
Application:	SDS-PAGE (SDS)

Product Details

Sequence:	ADPEFTPWSL ARPQGSCSLE GVEIKGGSFR LLQEGQALEY VCPSGFYYPYP VQTRTCRSTG SWSTLKTQDQ KTVRKAECRA IHCPRPDHF NGEYWPRSPY YNVSDEISFH CYDGYTLRGS ANRTCQVNGR WSGQTAICDN GAGYCSNPGI PIGTRKVGSQ YRLEDSVTYH CSRGLTLRGS QRRTCQEGGS WSGTEPSCQD SFMYDTPQEV AEAFLSSLTE TIEGVDAEDG HGPGEQQKRH HHHHH
Purity:	> 95 % by SDS - PAGE
Endotoxin Level:	< 1.0 EU per 1 microgram of protein (determined by LAL method)

Target Details

Target:	Complement Factor B (CFB)
Alternative Name:	CFB (CFB Products)

Target Details

Background: CFB, also known as complement factor B, is a component of the alternative pathway of complement activation. Factor B circulates in the blood as a single chain polypeptide. Upon activation of the alternative pathway, it is cleaved by complement factor D yielding the noncatalytic chain Ba and the catalytic subunit Bb. The active subunit Bb is a serine protease which associates with C3b to form the alternative pathway C3 convertase. Bb is involved in the proliferation of preactivated B lymphocytes, while Ba inhibits their proliferation. Recombinant human CFB protein, fused to His-tag at C-terminus, was expressed in insect cell and purified by using conventional chromatography techniques.

Molecular Weight: 27.3kDa (245aa) 28-40KDa (SDS-PAGE under reducing conditions.)

NCBI Accession: [NP_001701](#)

UniProt: [P00751](#)

Pathways: [Complement System](#), [Proton Transport](#), [Ribonucleoside Biosynthetic Process](#)

Application Details

Application Notes: Optimal working dilution should be determined by the investigator.

Restrictions: For Research Use only

Handling

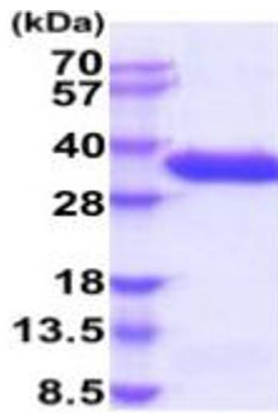
Format: Liquid

Concentration: 0.5 mg/mL

Buffer: Liquid. In Phosphate Buffered Saline (pH 7.4) containing 10 % glycerol.

Storage: 4 °C,-20 °C,-80 °C

Storage Comment: Can be stored at +4C short term (1-2 weeks). For long term storage, aliquot and store at -20C or -70C. Avoid repeated freezing and thawing cycles.



15% SDS-PAGE (3ug)

SDS-PAGE

Image 1.