

Datasheet for ABIN5854872
IL-31 Protein (AA 24-159) (His tag)



[Go to Product page](#)

1 Image

Overview

Quantity:	50 µg
Target:	IL-31 (IL31)
Protein Characteristics:	AA 24-159
Origin:	Dog
Source:	Baculovirus infected Insect Cells
Protein Type:	Recombinant
Purification tag / Conjugate:	This IL-31 protein is labelled with His tag.
Application:	SDS-PAGE (SDS)

Product Details

Sequence:	SHMAPTHQLP PSDVRKIILE LQPLSRGLLE DYQKKETGVP ESNRTLLLCL TSDSQPPRLN SSAILPYFRA IRPLSDKNII DKIIQLDKL KFHHEPETEI SVPADTFECK SFILTILQQF SACLESVFKS LNSGPQ
Purity:	> 95% by SDS-PAGE
Endotoxin Level:	< 1 EU per 1µg of protein (determined by LAL method)

Target Details

Target:	IL-31 (IL31)
Alternative Name:	IL-31 (IL31 Products)
Background:	IL31, also known as interleukin 31, is a member of the gp130/interleukin-6 cytokine family that is produced by cell types such as T helper 2 lymphocytes and cutaneous lymphocyte antigen

Target Details

positive skin homing T cells. IL-31 signals via a heterodimeric receptor complex composed of a gp130 related molecule termed IL-31RA (also GPL and GLMR) and an Oncostatin M receptor (OSM R beta). The IL-31 receptor is constitutively expressed by keratinocytes and upregulated by IFN gamma on monocytes. Recombinant canine IL31, fused to His-tag at C-terminus, was expressed in insect cell and purified by using conventional chromatography techniques.

Molecular Weight: 16.1 kDa (142aa)

NCBI Accession: [NP_001159386](#)

Application Details

Application Notes: Optimal working dilution should be determined by the investigator.

Restrictions: For Research Use only

Handling

Format: Liquid

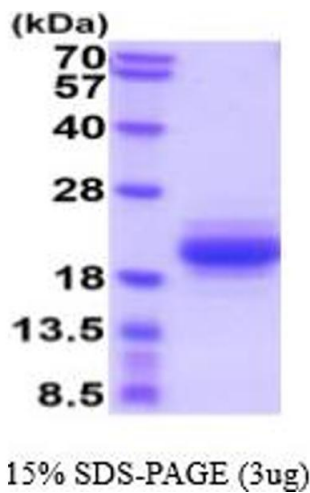
Concentration: 1 mg/mL

Buffer: Liquid. In Phosphate Buffered Saline (pH 7.4) containing 10 % glycerol.

Storage: 4 °C,-20 °C,-80 °C

Storage Comment: Can be stored at +2°C to +8°C for 1 week. For long term storage, aliquot and store at -20°C to -80°C. Avoid repeated freezing and thawing cycles.

Images



SDS-PAGE

Image 1.