

Datasheet for ABIN5854876
CSTF1 Protein (AA 1-431) (His tag)



[Go to Product page](#)

1 Image

Overview

| | |
|-------------------------------|--|
| Quantity: | 50 µg |
| Target: | CSTF1 |
| Protein Characteristics: | AA 1-431 |
| Origin: | Human |
| Source: | Baculovirus infected Insect Cells |
| Protein Type: | Recombinant |
| Purification tag / Conjugate: | This CSTF1 protein is labelled with His tag. |
| Application: | SDS-PAGE (SDS) |

Product Details

| | |
|------------------|--|
| Sequence: | MYRTKVGLKD RQQLYKLIIS QLLYDGYISI ANGLINEIKP QSVCAPSEQL LHLIKLGMEN DDTAVQYAIG RSDTVAPGTG IDLEFDADVQ TMSPEASEYE TCYVTSHKGP CRVATYSRDG QLIATGSADA SIKILDTERM LAKSAMPIEV MMNETAQQNM ENHPVIRTLY DHVDEVTCLA FHPTEQILAS GSRDYTLKLF DYSKPSAKRA FKYIQEAEML RSISFHPSGD FILVGTQHPT LRLYDINTFQ CFVSCNPQDQ HTDAICSVNY NSSANMYVTG SKDGCIKLWD GVSNRCITTF EKAHDGAEVC SAIFSKNSKY ILSSGKDSVA KLWEISTGRT LVRYTGAGLS GRQVHRTQAV FNHTEDYVLL PDERTISLCC WDSRTAERRN LLSLGHNNIV RCIVHSPTNP GFMTCSDDFR ARFWYRRSTT DHHHHHHH |
| Purity: | > 90 % by SDS - PAGE |
| Endotoxin Level: | < 1.0 EU per 1 microgram of protein (determined by LAL method) |

Target Details

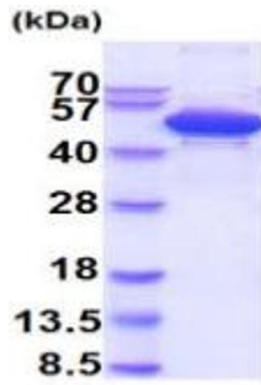
| | |
|-------------------|--|
| Target: | CSTF1 |
| Alternative Name: | CSTF1 (CSTF1 Products) |
| Background: | CSTF1, also known as cleavage stimulation factor subunit 1, is one of the multiple factors required for polyadenylation of mammalian pre-mRNAs in vitro. It is functioning with cleavage-polyadenylation specificity factor, two cleavage factors, and poly(A)+ polymerase. It is involved in the 3' end processing of messenger RNA precursors. Recombinant human CSTF1, fused to His-tag at C-terminus, was expressed in insect cell and purified by using conventional chromatography techniques. |
| Molecular Weight: | 49.1kDa (437aa) 40-57kDa (SDS-PAGE under reducing conditions) |
| NCBI Accession: | NP_001028693 |
| UniProt: | Q05048 |

Application Details

| | |
|--------------------|--|
| Application Notes: | Optimal working dilution should be determined by the investigator. |
| Restrictions: | For Research Use only |

Handling

| | |
|------------------|--|
| Format: | Liquid |
| Concentration: | 0.5 mg/mL |
| Buffer: | Liquid. In Phosphate Buffered Saline (pH 7.4) containing 1 mM DTT, 20 % glycerol. |
| Storage: | 4 °C,-20 °C,-80 °C |
| Storage Comment: | Can be stored at +4C short term (1-2 weeks). For long term storage, aliquot and store at -20C or -70C. Avoid repeated freezing and thawing cycles. |



15% SDS-PAGE (3ug)

SDS-PAGE

Image 1.