

Datasheet for ABIN5854889

## Glypican 3 Protein (GPC3) (AA 25-559) (His tag)



[Go to Product page](#)

### 1 Image

#### Overview

Quantity:	50 µg
Target:	Glypican 3 (GPC3)
Protein Characteristics:	AA 25-559
Origin:	Human
Source:	Baculovirus infected Insect Cells
Protein Type:	Recombinant
Purification tag / Conjugate:	This Glypican 3 protein is labelled with His tag.
Application:	SDS-PAGE (SDS)

#### Product Details

Sequence:	ADPQPPPPPP DATCHQVRSF FQRLQPGLKW VPETPVPGSD LQVCLPKGPT CCSRKMEEKY QLTARLNMEQ LLQSASMELEK FLIIQNAAVF QEAFEIVVRH AKNYTNAMFK NNYPSTLPQA FEFVGEFFTD VSLYILGSDI NVDDMVNELF DSLFPVIYTQ LMNPGLPDSA LDINECLRGA RRDLKVFGNF PKLIMTQVSK SLQVTRIFLQ ALNLGIEVIN TTDHLKFSKD CGRMLTRMWY CSYCQGLMMV KPCGGYCNVW MQGCMAGVVE IDKYWREYIL SLEELVNGMY RIYDMENVLL GLFSTIHDSI QYVQKNAGKL TTTIGKLCAH SQQRQYRSAY YPEDLFIDKK VLKVAHVEHE ETLSSRRREL IQKLKSFISF YSALPGYICS HSPVAENDTL CWNGQELVER YSQAARNGM KNQFNLHELK MKGPEPVVSQ IIDKLKHINQ LLRTMSMPKG RVLDKNLDEE GFESGDCGDD EDEICGGSGD GMIKVKNQLR FLAELAYDLD VDDAPGNSQQ ATPKDNEIST FHNLGNVHHH HHHH
Purity:	> 90% by SDS-PAGE
Endotoxin Level:	< 1 EU per 1µg of protein (determined by LAL method)

## Target Details

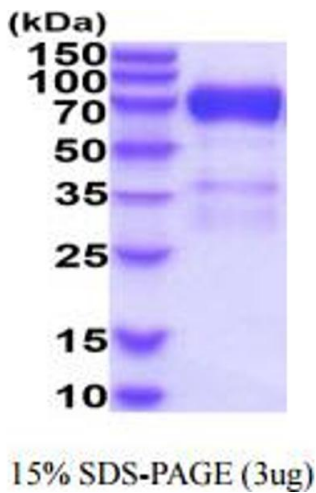
Target:	Glypican 3 (GPC3)
Alternative Name:	Glypican 3 ( <a href="#">GPC3 Products</a> )
Background:	GPC3, also known as glypican-3 isoform 2, is a member of the glypican family. It belongs to the glypican family and is highly expressed in lung, liver, and kidney. Also, it has tissue dependent. In some tissues, it acts as a tumor suppressor gene and an oncofetal protein. This protein is currently regarded as a tumor marker and potential target for immunotherapy. Recombinant human GPC3, fused to His-tag at C-terminus, was expressed in insect cell and purified by using conventional chromatography techniques.
Molecular Weight:	61.8 kDa (544aa)
NCBI Accession:	<a href="#">NP_004475</a>
UniProt:	<a href="#">P51654</a>
Pathways:	<a href="#">Glycosaminoglycan Metabolic Process</a>

## Application Details

Application Notes:	Optimal working dilution should be determined by the investigator.
Restrictions:	For Research Use only

## Handling

Format:	Liquid
Concentration:	0.5 mg/mL
Buffer:	Liquid. In Phosphate Buffered Saline ( pH 7.4) containing 10 % glycerol.
Storage:	4 °C,-20 °C,-80 °C
Storage Comment:	Can be stored at +2°C to +8°C for 1 week. For long term storage, aliquot and store at -20°C to -80°C. Avoid repeated freezing and thawing cycles.



SDS-PAGE
Image 1.