

Datasheet for ABIN5854898

**CLEC10A Protein (AA 61-292) (His tag)**[Go to Product page](#)**1** Image

## Overview

Quantity:	50 µg
Target:	CLEC10A
Protein Characteristics:	AA 61-292
Origin:	Human
Source:	Baculovirus infected Insect Cells
Protein Type:	Recombinant
Purification tag / Conjugate:	This CLEC10A protein is labelled with His tag.
Application:	SDS-PAGE (SDS)

## Product Details

Sequence:	ADPQNSKFQR DLVTLRTDFS NFTSNTVAEI QALTSQGSSL EETIASLKAE VEGFKQERQA VHSEMLLRVQ QLVQDLKHLT CQVATLNNNG EEASTEGTCC PVNWWVEHQDS CYWFSHSGMS WAEAEKYCQL KNAHLVINS REEQNFVQKY LGSAYTWMGL SDPEGAWKWW DGTDYATGFQ NWKPGQPDDW QGHGLGGGED CAHFHPDGRW NDDVCQRPYH WVCEAGLGQT SQESHSHHHHH H
Purity:	> 90 % by SDS - PAGE
Endotoxin Level:	< 1.0 EU per 1 microgram of protein (determined by LAL method)

## Target Details

Target:	CLEC10A
Alternative Name:	CLEC10A ( <a href="#">CLEC10A Products</a> )

## Target Details

---

**Background:** CLEC10A, also known as C-type lectin domain family 10 member A isoform 2, is a C-type lectin superfamily member 14. It is expressed on immature myeloid dendritic cells and alternatively activated macrophages. This protein roles in regulating adaptive and innate immune responses. Also, it binds in a calcium-dependent manner to terminal galactose and N-acetylgalactosamine, linked to serine or threonine. Recombinant human CLEC10A, fused to His-tag at C-terminus, was expressed in insect cell and purified by using conventional chromatography techniques.

**Molecular Weight:** 27.3kDa (241aa) 28-40kDa (SDS-PAGE under reducing conditions.)

**NCBI Accession:** [NP\\_006335](#)

**UniProt:** [Q8IUN9](#)

## Application Details

---

**Application Notes:** Optimal working dilution should be determined by the investigator.

**Restrictions:** For Research Use only

## Handling

---

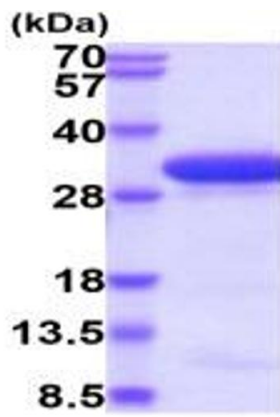
**Format:** Liquid

**Concentration:** 0.5 mg/mL

**Buffer:** Liquid. In Phosphate Buffered Saline ( pH 7.4).

**Storage:** 4 °C,-20 °C,-80 °C

**Storage Comment:** Can be stored at +4C short term (1-2 weeks). For long term storage, aliquot and store at -20C or -70C. Avoid repeated freezing and thawing cycles.



15% SDS-PAGE (3ug)

**SDS-PAGE**

Image 1.