

Datasheet for ABIN5854914

PROCR Protein (AA 18-210) (hlgG-His-tag)[Go to Product page](#)**1** Image

Overview

Quantity:	50 µg
Target:	PROCR
Protein Characteristics:	AA 18-210
Origin:	Human
Source:	Baculovirus infected Insect Cells
Protein Type:	Recombinant
Purification tag / Conjugate:	This PROCR protein is labelled with hlgG-His-tag.
Application:	SDS-PAGE (SDS)

Product Details

Sequence:	ADPSQDASDG LQRLHMLQIS YFRDPYHVWY QGNASLGGHL THVLEGPDTN TTIIQLQLPLQ EPESWARTQS GLQSYLLQFH GLVRLVHQR TLAFLPTIRC FLGCELPPEG SRAHVFFEVA VNGSSFVSFR PERALWQADT QVTSGVVTFT LQQLNAYNRT RYELREFLED TCVQYVQKHI SAENTKGSQT SRSYTSLEPK SCDKTHTCPP CPAPELLGGP SVFLFPPKPK DTLMISRTPE VTCVVVDVSH EDPEVKFNWY VDGVEVHNAK TKPREEQYNS TYRVVSVLTV LHQDWLNGKE YKCKVSNKAL PAPIEKTISK AKGQPREPQV YTLPPSRDEL TKNQVSLTCL VKGFYPSDIA VEWESNGQPE NNYKTTTPVL DSDGSFFLYS KLTVDKSRWQ QGNVFSCSVM HEALHNHYTQ KSLSLSPGKH HHHHH
Purity:	> 95 % by SDS - PAGE
Endotoxin Level:	< 1.0 EU per 1ug of protein (determined by LAL method)

Target Details

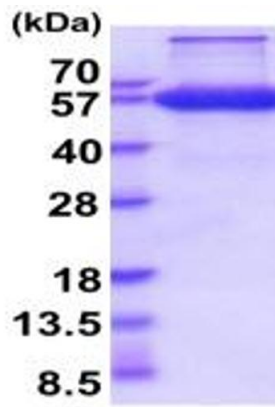
Target:	PROCR
Alternative Name:	PROCR (PROCR Products)
Background:	PROCR, also known as endothelial protein C receptor, is a receptor for activated protein C, a serine protease activated by and involved in the blood coagulation pathway. It is a transmembrane glycoprotein expressed on vascular endothelial cells and functions as a negative regulator of thrombosis. Recombinant human PROCR protein, fused to hlgG-His-tag at C-terminus, was expressed in insect cell and purified by using conventional chromatography techniques.
Molecular Weight:	49.3kDa (435aa) 40-57KDa (SDS-PAGE under reducing conditions.)
NCBI Accession:	NP_006395
UniProt:	Q9UNN8

Application Details

Application Notes:	Optimal working dilution should be determined by the investigator.
Restrictions:	For Research Use only

Handling

Format:	Liquid
Concentration:	0.5 mg/mL
Buffer:	Liquid. In Phosphate Buffered Saline (pH 7.4) containing 10 % glycerol.
Storage:	4 °C,-20 °C,-80 °C
Storage Comment:	Can be stored at +4C short term (1-2 weeks). For long term storage, aliquot and store at -20C or -70C. Avoid repeated freezing and thawing cycles.



15% SDS-PAGE (3ug)

SDS-PAGE

Image 1.