

Datasheet for ABIN5854924

CEACAM3 Protein (AA 35-155) (His tag)[Go to Product page](#)**1** Image

Overview

Quantity:	50 µg
Target:	CEACAM3
Protein Characteristics:	AA 35-155
Origin:	Human
Source:	Baculovirus infected Insect Cells
Protein Type:	Recombinant
Purification tag / Conjugate:	This CEACAM3 protein is labelled with His tag.
Application:	SDS-PAGE (SDS)

Product Details

Sequence:	ADPKLTIESM PLSVAEGKEV LLLVHNLPQH LFGYSWYKGE RVDGNSLIVG YVIGTQQATP GAAYSGRETI YTNASLLIQN VTQNDIGFYT LQVIKSDLVN EEATGQFHVY QENAPGLPVG AVAGHHHHHH
Purity:	> 95 % by SDS - PAGE
Endotoxin Level:	< 1.0 EU per 1ug of protein (determined by LAL method)

Target Details

Target:	CEACAM3
Alternative Name:	CEACAM3 (CEACAM3 Products)
Background:	CEACAM3, also known as carcinoembryonic antigen-related cell adhesion molecule 3 isoform 1, is a granulocyte-specific receptor involved in the opsonin-independent recognition of several

Target Details

bacterial pathogens. Members of CEACAM family are widely expressed especially on human neutrophils, and, depending on the tissue, capable of regulating diverse functions including tumor promotion, tumor suppression. Also, it mediates cell adhesion via homophilic as well as heterophilic binding to other proteins of the subgroup. Recombinant human CEACAM3, fused to His-tag at C-terminus, was expressed in insect cell and purified by using conventional chromatography techniques.

Molecular Weight: 14.2kDa (130aa) 13.5-18kDa (SDS-PAGE under reducing conditions.)

NCBI Accession: [NP_001806](#)

UniProt: [P40198](#)

Application Details

Application Notes: Optimal working dilution should be determined by the investigator.

Restrictions: For Research Use only

Handling

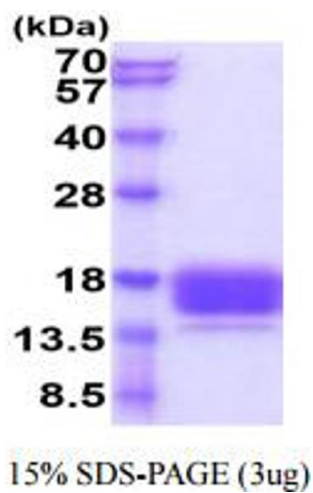
Format: Liquid

Concentration: 1.0 mg/mL

Buffer: Liquid. In Phosphate Buffered Saline (pH 7.4) containing 10 % glycerol.

Storage: 4 °C,-20 °C,-80 °C

Storage Comment: Can be stored at +4C short term (1-2 weeks). For long term storage, aliquot and store at -20C or -70C. Avoid repeated freezing and thawing cycles.



SDS-PAGE
Image 1.