

Datasheet for ABIN5854930

L1CAM Protein (AA 20-1115) (His tag)



[Go to Product page](#)

1 Image

Overview

Quantity:	50 µg
Target:	L1CAM
Protein Characteristics:	AA 20-1115
Origin:	Human
Source:	Baculovirus infected Insect Cells
Protein Type:	Recombinant
Purification tag / Conjugate:	This L1CAM protein is labelled with His tag.
Application:	SDS-PAGE (SDS)

Product Details

Sequence: IQIPEELMEP PVITEQSPRR LVVFPTDDIS LKCEASGKPE VQFRWTRDGV HFKPKEELGV
TVYQSPHSGS FTITGNNSNF AQRFGQIYRC FASNKLG TAM SHEIRLMAEG APKWPKETVK
PVEVEEGESV VLPCNPPPSA EPLRIYWMNS KILHIKQDER VTMGQNGNLY FANVLTSDNH
SDYICAHFHP GTRTIIQKEP IDLRVKATNS MIDRKPRLLF PTNSSSHLVA LQGQPLVLEC
IAEGFPTPTI KWL RPSGPMP ADRVTYQNHN KTLQLLKVGE EDDGEYRCLA ENSLGSARHA
YYVTVEAAPY WLHKPQSHLY GPGETARLDC QVQGRPQPEV TWRINGIPVE ELAKDQKYRI
QRGALILSNV QPSDTMVTQC EARNRHG LLL ANAYIYVVQL PAKILTADNQ TYMAVQGSTA
YLLCKAFGAP VPSVQWLDED GTTVLQDERF FPYANGTLGI RDLQANDTGR YFCLAANDQN
NVTIMANLKV KDATQITQGP RSTIEKKGSR VTFTCQASFD PSLQPSITWR GDGRDLQELG
DSDKYFIEDG RLVHSLDYS DQGNYS CVAS TELDVVESRA QLLVVGSPGP VPRLVLSDLH
LLTQSQRVRS WSPAEDHNAP IEKYDIEFED KEMAPEKWYS LGKVPGNQTS TTLKLSPYVH
YTFRVTAINK YGPGESPVS ETVVTPEAAP EKNPVDVKGE GNETTNM VIT WKPLRWMDWN

Product Details

APQVQYRVQW RPQGTRGPWQ EQIVSDPFLV VSNTSTFVPY EIKVQAVNSQ GKGPEPQVTI
GYSGEDYPQA IPELEGIEIL NSSAVLVKWR PVDLAQVKGH LRGYNVTYWR EGSQRKHSKR
HIHKDHVVVP ANTTSVILSG LRPYSSYHLE VQAFNGRGS G PASEFTFSTP EGVPGHPEAL
HLECQSNTSL LLRWQPPLSH NGVLTGYVLS YHPLDEGGKG QLSFNLRDPE LRTHNLTDLS
PHLRYRFQLQ ATTKEGPGEA IVREGGTMAL SGISDFGNIS ATAGENYSV SWVPKEGQCN
FRFHILFKAL GEEKGGASLS PQYVSYNQSS YTQWDLQPDY DYEIHLFKER MFRHQMAVKT
NGTGRVRLPP AGFATELEHH HHHH

Purity: > 90 % by SDS - PAGE

Endotoxin Level: < 1.0 EU per 1ug of protein (determined by LAL method)

Target Details

Target: L1CAM

Alternative Name: L1CAM ([L1CAM Products](#))

Background: L1CAM, also known as neural cell adhesion molecule L1 isoform 3, is a cell adhesion receptor of the immunoglobulin superfamily, known for its roles in nerve cell function. It is now recognized to play a key role in cell migration, adhesion, neurite outgrowth, myelination and neuronal differentiation. Overexpression of L1CAM in normal and cancer cells increased motility, enhanced growth rate and promoted cell transformation and tumorigenicity. Recombinant human L1CAM, fused to His-tag at C-terminus, was expressed in insect cell and purified by using conventional chromatography techniques.

Molecular Weight: 123.6kDa (1104aa) 100-150kDa (SDS-PAGE under reducing conditions)

NCBI Accession: [NP_001137435](#)

UniProt: [P32004](#)

Pathways: [Synaptic Membrane](#)

Application Details

Application Notes: Optimal working dilution should be determined by the investigator.

Restrictions: For Research Use only

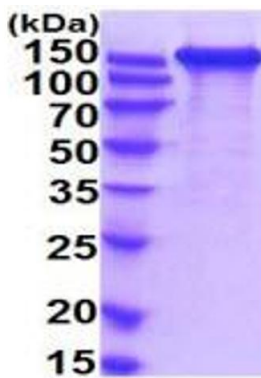
Handling

Format: Liquid

Handling

Concentration:	0.25 mg/mL
Buffer:	Liquid. In Phosphate Buffered Saline (pH 7.4) containing 10 % glycerol.
Storage:	4 °C,-20 °C,-80 °C
Storage Comment:	Can be stored at +4C short term (1-2 weeks). For long term storage, aliquot and store at -20C or -70C. Avoid repeated freezing and thawing cycles.

Images



15% SDS-PAGE (3ug)

SDS-PAGE

Image 1.