

Datasheet for ABIN5854932
KIT Ligand Protein (KITLG) (AA 26-189)



[Go to Product page](#)

1 Image

Overview

| | |
|--------------------------|----------------------------|
| Quantity: | 5 µg |
| Target: | KIT Ligand (KITLG) |
| Protein Characteristics: | AA 26-189 |
| Origin: | Human |
| Source: | Escherichia coli (E. coli) |
| Protein Type: | Recombinant |
| Biological Activity: | Active |
| Application: | SDS-PAGE (SDS) |

Product Details

| | |
|------------------------------|---|
| Sequence: | MEGICRNRVT NNVKDVTCLV ANLPKDYMIT LKYVPGMDVL PSHCWISEMV VQLSDSLTDL LDKFSNISEG LSNYSIIDKL VNIVDDLVEC VKENSSKDLK KSFKSPEPRL FTPEEFFRIF NRSIDAFKDF VVASETSDCV VSSTLSPEKD SRVSVTKPFM LPPVA |
| Purity: | > 95 % by SDS - PAGE |
| Endotoxin Level: | < 1.0 EU per 1ug of protein (determined by LAL method) |
| Biological Activity Comment: | Measured in a cell proliferation assay using TF-1 human erythroleukemic cells. The ED50 for this effect is less or equal to 10 ng/ml. |

Target Details

| | |
|-------------------|--|
| Target: | KIT Ligand (KITLG) |
| Alternative Name: | SCF (KITLG Products) |

Target Details

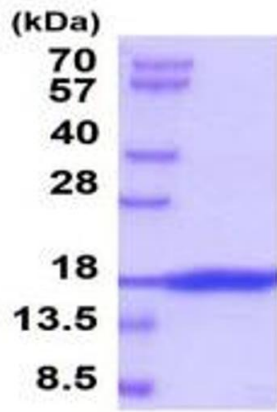
| | |
|-------------------|---|
| Background: | Stem Cell Factor (SCF) is a glycoprotein that plays a key role in hematopoiesis acting both as a positive and negative regulator, often in synergy with other cytokines. SCF binds to and activates the SCF receptor (SCFR), a receptor tyrosine kinase. SCF stimulates the proliferation of mast cells and is able to augment the proliferation of both myeloid and lymphoid hematopoietic progenitors in bone marrow culture. It also mediates cell-cell adhesion and acts synergistically with other cytokine. Recombinant human SCF was expressed in E. coli and purified by conventional column chromatography, after refolding of the isolated inclusion bodies in a renaturation buffer. |
| Molecular Weight: | 18.5 kDa (165 aa), confirmed by MALDI-TOF |
| NCBI Accession: | NP_000890 |
| UniProt: | P21583 |
| Pathways: | RTK Signaling , Fc-epsilon Receptor Signaling Pathway , EGFR Signaling Pathway , Neurotrophin Signaling Pathway |

Application Details

| | |
|--------------------|--|
| Application Notes: | Optimal working dilution should be determined by the investigator. |
| Comment: | Bioactivity Validated |
| Restrictions: | For Research Use only |

Handling

| | |
|------------------|--|
| Format: | Liquid |
| Concentration: | 1 mg/mL |
| Buffer: | Liquid. In Phosphate buffer saline (pH 7.4) |
| Storage: | 4 °C,-20 °C,-80 °C |
| Storage Comment: | Can be stored at +4C short term (1-2 weeks). For long term storage, aliquot and store at -20C or -70C. Avoid repeated freezing and thawing cycles. |



15% SDS-PAGE (3ug)

SDS-PAGE

Image 1.