

Datasheet for ABIN5854946
PSG1 Protein (AA 35-419) (His tag)



[Go to Product page](#)

1 Image

Overview

Quantity:	50 µg
Target:	PSG1
Protein Characteristics:	AA 35-419
Origin:	Human
Source:	Baculovirus infected Insect Cells
Protein Type:	Recombinant
Purification tag / Conjugate:	This PSG1 protein is labelled with His tag.
Application:	SDS-PAGE (SDS)

Product Details

Sequence:	ADLQVTIEAE PTKVSEGKDV LLLVHNL PQN LTGYIWYKGQ MRDLYHYITS YVVDGEIIIY GPAYSGRETA YSNASLLIQN VTREDAGSYT LHIKGGDDGT RGVTGRFTFT LHLETPKPSI SSSNLNPRET MEAVSLTCDP ETPDASYLWW MNGQSLPMTH SLKLSETNRT LFLLGVTKYT AGPYECEIRN PVSASRSDPV TLNLLPKLPK PYITINNLNP RENKDVLNFT CEPKSENYTY IWWLNGQSLP VSPRVKRPIE NRILILPSVT RNETGPYQCE IRDRYGGIRS DPVTLNVL YG PDLPRIYPSF TYYRSGEVLY LSCSADS NPP AQYSWTINEK FQLPGQK LFI RHITTKHSG L YVCSVRNSAT GKESKSM TV EVSGKWIPHH HHHH
Purity:	> 90 % by SDS - PAGE
Endotoxin Level:	< 1.0 EU per 1µg of protein (determined by LAL method)

Target Details

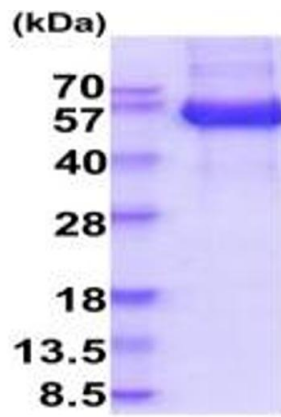
Target:	PSG1
Alternative Name:	PSG1 (PSG1 Products)
Background:	PSG1, also known as Pregnancy-specific beta-1-glycoprotein 1, is a secreted glycoprotein of the human PSG family within the CEA (carcinoembryonic antigen) superfamily. PSGs (Pregnancy-specific glycoproteins) are a complex consisting of carbohydrate and protein. It is the most abundant protein found in the maternal bloodstream during the later stages of pregnancy and is of vital importance in fetal development. The PSG functions primarily as an immune-modulator to protect the growing fetus. Recombinant human PSG1 protein, fused to His-tag at C-terminus, was expressed in insect cell and purified by using conventional chromatography techniques.
Molecular Weight:	44.6kDa (394aa) 40-57KDa (SDS-PAGE under reducing conditions.)
NCBI Accession:	NP_008836
UniProt:	P11464

Application Details

Application Notes:	Optimal working dilution should be determined by the investigator.
Restrictions:	For Research Use only

Handling

Format:	Liquid
Concentration:	0.25 mg/mL
Buffer:	Liquid. In Phosphate Buffered Saline (pH 7.4) containing 20 % glycerol.
Storage:	4 °C,-20 °C,-80 °C
Storage Comment:	Can be stored at +4C short term (1-2 weeks). For long term storage, aliquot and store at -20C or -70C. Avoid repeated freezing and thawing cycles.



15% SDS-PAGE (3ug)

SDS-PAGE

Image 1.