



[Go to Product page](#)

Datasheet for ABIN5854970
CALU Protein (AA 20-315)

1 Image

Overview

Quantity:	50 µg
Target:	CALU
Protein Characteristics:	AA 20-315
Origin:	Human
Source:	Escherichia coli (E. coli)
Protein Type:	Recombinant
Application:	SDS-PAGE (SDS)

Product Details

Sequence: MKPTEKKDRV HHEPQLSDKV HNDAQSFDYD HDAFLGAEAA KTFDQLTPEE SKERLGKIVS
KIDGDKDGFV TVDELKDWIK FAQKRWIYED VERQWKGHDL NEDGLVSWEE YKNATYGYVL
DDPDPDDGFN YKQMMVRDER RFKMADKDGD LIATKEEFTA FLHPEEYDYM KDIVVQETME
DIDKNADGFI DLEEYIGDMY SHDGNTDEPE WVKTEREQFV EFRDKNRDGK MDKEETKDWI
LPSDYDHAEA EARHLVYESD QNKDGKLTKE EIVDKYDLFV GSQATDFGEA LVRHDEF

Purity: > 90 % by SDS - PAGE

Target Details

Target:	CALU
Alternative Name:	Calumenin (CALU Products)
Background:	Calumenin, also known as calumenin isoform a, which is a multiple EF-hand calcium-binding protein located in endoplasmic reticulum(ER) and sarcoplasmic reticulum (SR) of mammalian

Target Details

tissues. This protein binds 7 calcium ions with a low affinity and is involved in such ER functions as protein folding and sorting. Recombinant human Calumenin protein was expressed in E.coli and purified by using conventional chromatography.

Molecular Weight: 35 kDa (297aa), confirmed by MALDI-TOF

NCBI Accession: [NP_001210](#)

UniProt: [O43852](#)

Application Details

Application Notes: Optimal working dilution should be determined by the investigator.

Restrictions: For Research Use only

Handling

Format: Liquid

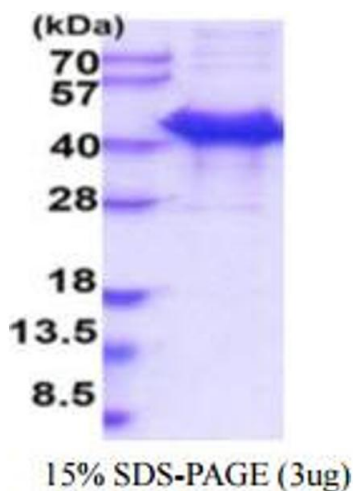
Concentration: 0.5 mg/mL

Buffer: Liquid In Phosphate buffered saline (pH 7.4) containing 10 % Glycerol

Storage: 4 °C,-20 °C,-80 °C

Storage Comment: Can be stored at +4C short term (1-2 weeks). For long term storage, aliquot and store at -20C or -70C. Avoid repeated freezing and thawing cycles.

Images



SDS-PAGE

Image 1.