

Datasheet for ABIN5854993
KIT Protein (AA 26-524) (His tag)



[Go to Product page](#)

1 Image

Overview

Quantity:	50 µg
Target:	KIT
Protein Characteristics:	AA 26-524
Origin:	Human
Source:	Baculovirus infected Insect Cells
Protein Type:	Recombinant
Purification tag / Conjugate:	This KIT protein is labelled with His tag.
Application:	SDS-PAGE (SDS)

Product Details

Sequence: QPSVSPGEPSPPSIHPGKSDLIVRVGDEIRLLCTDPGFVKWTFEILDETENKQNEWITE
KAEATNTGKYTCTNKHGLSN SIYVFVRDPAKLFLVDRSLYGKEDNDTLVRCPLTDPEVTN
YSLKGCQGKPLPKDLRFIPDPKAGIMIKSVKRAYHRLCLHCSVDQEGKSVLSEKILKVR
PAFKAVPVVSVKASYLLREGEEFTVTCTIKDVSSSVYSTWKRENSQTKLQEKYNSWHHG
DFNYERQATLTISSARVNDSGVFMCYANNTFGSANVTTTLEVVDKGFINI FPMINTTVFV
NDGENVDLIV EYEAFPKPEHQQWIYMNRTFTDKWEDYPKSENESNIRYVSELHLTRLKGT
EGGTYTFVLVNSDVNAAIANVYVNTKPEILTYDRLVNGMLQCVAAGFPEPTIDWYFCPG
TEQRCSASVLPVDVQTLNSSGPPFGKLVVQSSIDSSAFKHNGTVECKAYNDVGKTSAYFN
FAFKGNNKEQIHPHTLFTPL EHHHHHH

Purity: > 90 % by SDS - PAGE

Endotoxin Level: < 1.0 EU per 1ug of protein (determined by LAL method)

Target Details

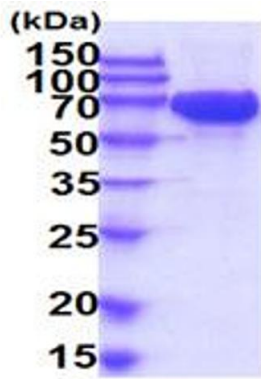
Target:	KIT
Alternative Name:	KIT (KIT Products)
Background:	<p>KIT, also known as mast/stem cell growth factor receptor Kit isoform 1, is a cytokine receptor that is expressed not only in hematopoietic stem cells but also in other cell types. It binds to receptor tyrosine kinase type III, a stem cell factor, also called a rigid factor or c-kit ligand. When this receptor binds to stem cell factor (SCF), it forms a dimer that activates intrinsic tyrosine kinase activity, which, in turn, phosphorylates and activates signaling molecules that propagate signals in cells. This receptor protects vascular smooth muscle cells from apoptosis and helps restore cardiac function after myocardial infarction. Recombinant human KIT, fused to His-tag at C-terminus, was expressed in insect cell and purified by using conventional chromatography techniques.</p>
Molecular Weight:	57.1kDa (507aa) 50-70kDa (SDS-PAGE under reducing conditions)
NCBI Accession:	NP_000213
UniProt:	P10721
Pathways:	RTK Signaling , Fc-epsilon Receptor Signaling Pathway , EGFR Signaling Pathway , Neurotrophin Signaling Pathway , Sensory Perception of Sound , Stem Cell Maintenance , Production of Molecular Mediator of Immune Response , Regulation of long-term Neuronal Synaptic Plasticity

Application Details

Application Notes:	Optimal working dilution should be determined by the investigator.
Restrictions:	For Research Use only

Handling

Format:	Liquid
Concentration:	0.25 mg/mL
Buffer:	Liquid. In Phosphate Buffered Saline (pH 7.4) containing 10 % glycerol.
Storage:	4 °C,-20 °C,-80 °C
Storage Comment:	Can be stored at +4C short term (1-2 weeks). For long term storage, aliquot and store at -20C or -70C. Avoid repeated freezing and thawing cycles.



15% SDS-PAGE (3ug)

SDS-PAGE

Image 1.