

Datasheet for ABIN5855003

FCGR3B Protein (AA 21-200) (His tag)



[Go to Product page](#)

1 Image

Overview

Quantity:	50 µg
Target:	FCGR3B
Protein Characteristics:	AA 21-200
Origin:	Human
Source:	Baculovirus infected Insect Cells
Protein Type:	Recombinant
Purification tag / Conjugate:	This FCGR3B protein is labelled with His tag.
Application:	SDS-PAGE (SDS)

Product Details

Sequence:	EDLPKAVVFL EPQWYSVLEK DSVTLKCQGA YSPEDNSTQW FHNENLISSQ ASSYFIDAAT VNDSGEYRCQ TNLSTLSDPV QLEVHIGWLL LQAPRWVFKE EDPIHLRCHS WKNTALHKVT YLQNGKDRKY FHHNSDFHIP KATLKDSGSY FCRGLVGSKN VSSETVNITI TQGLAVSTIS
Purity:	> 90% by SDS-PAGE
Endotoxin Level:	< 1 EU per 1µg of protein (determined by LAL method)

Target Details

Target:	FCGR3B
Alternative Name:	CD16b/FCGR3B (FCGR3B Products)
Background:	FCGR3B, also known as low affinity immunoglobulin gamma Fc region receptor III-B isoform 2, is a member of Ig super family. It encodes a glycosylphosphatidylinositol (GPI) -anchored

Target Details

protein that is expressed constitutively by neutrophils and after gamma-interferon stimulation by eosinophils. This protein binds to complex or aggregated IgG and monomeric IgG. Unlike III-A, it cannot mediate antibody-dependent cytotoxicity and phagocytosis. It can be a trap of immune complexes in peripheral blood circulation that does not activate neutrophils. Recombinant human FCGR3B, fused to His-tag at C-terminus, was expressed in insect cell and purified by using conventional chromatography techniques.

Molecular Weight: 21.4 kDa (188aa)

NCBI Accession: [NP_000561](#)

UniProt: [O75015](#)

Application Details

Application Notes: Optimal working dilution should be determined by the investigator.

Restrictions: For Research Use only

Handling

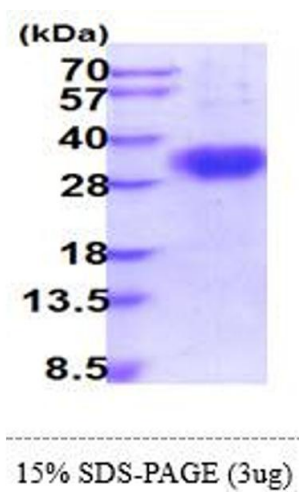
Format: Liquid

Concentration: 0.25 mg/mL

Buffer: Liquid. In Phosphate Buffered Saline (pH 7.4) containing 10 % glycerol.

Storage: 4 °C,-20 °C,-80 °C

Storage Comment: Can be stored at +2°C to +8°C for 1 week. For long term storage, aliquot and store at -20°C to -80°C. Avoid repeated freezing and thawing cycles.



SDS-PAGE
Image 1.