

Datasheet for ABIN5855005

L-Selectin Protein (AA 52-345) (His tag)



[Go to Product page](#)

1 Image

Overview

Quantity:	50 µg
Target:	L-Selectin (SELL)
Protein Characteristics:	AA 52-345
Origin:	Human
Source:	Baculovirus infected Insect Cells
Protein Type:	Recombinant
Purification tag / Conjugate:	This L-Selectin protein is labelled with His tag.
Application:	SDS-PAGE (SDS)

Product Details

Sequence:	WTYHYSE KPMNWQRARR FCRDNYTDLV AIQNKAEIEY LEKTLPFSSRS YYWIGIRKIG GIWTWVGTNK SLTEEAENWG DGEPNNKKNK EDCVEIYIKR NKDAGKWND DACHKLKAALC YTASCQPWSC SGHGECVEII NNYTCNCDVG YYGPQCQFVI QCEPLEAPEL GTMDCTHPLG NFSFSSQCAF SCSEGTNLTG IEETTCGPFG NWSSPEPTCQ VIQCEPLSAP DLGIMNCSHP LASFSFTSAC TFICSEGTEL IGKKKTICES SGIWSNPSP I CQKLDKSFSM IKEGDY
Purity:	> 90% by SDS-PAGE
Endotoxin Level:	< 1 EU per 1 µg of protein (determined by LAL method)

Target Details

Target:	L-Selectin (SELL)
Alternative Name:	L-Selectin/CD62L (SELL Products)

Target Details

Background: SELL, also known as L-selectin, is a cell surface component that is a member of a family of adhesion/homing receptors that play important roles in lymphocyte-endothelial cell interactions. This protein mediated lymphocyte recirculation is required for maintaining the appropriate tissue distribution of lymphocyte subpopulations including naive and effector subsets such as regulatory T cells. Importantly, this protein has been shown to have both adhesive and signaling functions during leukocyte migration. Recombinant human SELL, fused to His-tag at C-terminus, was expressed in insect cell and purified by using conventional chromatography techniques.

Molecular Weight: 34.1 kDa (303aa)

NCBI Accession: [NP_000646](#)

UniProt: [P14151](#)

Application Details

Application Notes: Optimal working dilution should be determined by the investigator.

Restrictions: For Research Use only

Handling

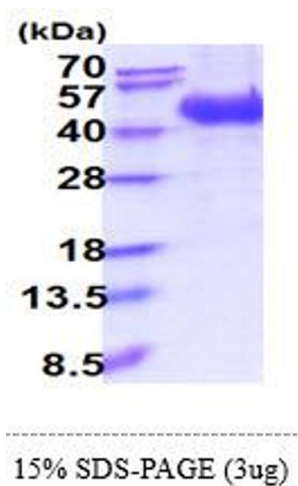
Format: Liquid

Concentration: 0.25 mg/mL

Buffer: Liquid. In Phosphate Buffered Saline (pH 7.4) containing 10 % glycerol.

Storage: 4 °C,-20 °C,-80 °C

Storage Comment: Can be stored at +2°C to +8°C for 1 week. For long term storage, aliquot and store at -20°C to -80°C. Avoid repeated freezing and thawing cycles.



SDS-PAGE
Image 1.