

Datasheet for ABIN5855013
LAMP2 Protein (AA 29-375) (His tag)



[Go to Product page](#)

1 Image

Overview

Quantity:	50 µg
Target:	LAMP2
Protein Characteristics:	AA 29-375
Origin:	Human
Source:	Baculovirus infected Insect Cells
Protein Type:	Recombinant
Purification tag / Conjugate:	This LAMP2 protein is labelled with His tag.
Application:	SDS-PAGE (SDS)

Product Details

Sequence: ADPLELNLT D SENATCLYAK WQMNFVRYE TTNKTYKTVT ISDHGTVTYN GSICGDDQNG
PKIAVQFGPG FSWIANFTKA ASTYSIDSVS FSYNTGDNTT FPDAEDKGIL TVDELLAIRI
PLNDFRCNS LSTLEKNDVV QHYWDVLVQA FVQNGTVSTN EFLCDKDKTS TVAPTIHTTV
PSPTTTPPK EKPEAGTYSV NNGNDTCLLA TMGLQLNITQ DKVASVININ PNTTHSTGSC
RSHTALLRLN SSTIKYLDV FAVKNENRFY LKEVNISMYL VNGSVFSIAN NNLSYWDAPL
GSSYMCNKEQ TVSVSGAFQI NTFDLRVQPF NVTQ GKYSTA QDCSADDDNF HHHHHH

Purity:	> 90 % by SDS - PAGE
Endotoxin Level:	< 1.0 EU per 1ug of protein (determined by LAL method)

Target Details

Target:	LAMP2
---------	-------

Target Details

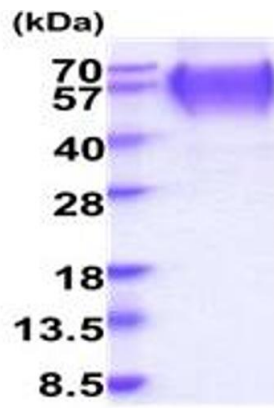
Alternative Name:	LAMP2 (LAMP2 Products)
Background:	LAMP2, also known as lysosome-associated membrane glycoprotein 2 isoform A, is a major component of lysosomal membranes. It provides selectins with carbohydrate ligands. This protein mediates the lysosomal uptake of the chaperone HSC73 in complex with cargo proteins and is required for the lysosomal destruction of autophagic vacuoles. Deficiency of LAMP2 is a rare X-linked lysosomal disease characterized by cardiomyopathy, vacuolar myopathy, and mental retardation. Recombinant human LAMP2 protein, fused to His-tag at C-terminus, was expressed in insect cell and purified by using conventional chromatography techniques.
Molecular Weight:	39.4kDa (356aa) 57-70KDa (SDS-PAGE under reducing conditions.)
NCBI Accession:	NP_002285
UniProt:	P13473
Pathways:	Autophagy

Application Details

Application Notes:	Optimal working dilution should be determined by the investigator.
Restrictions:	For Research Use only

Handling

Format:	Liquid
Concentration:	0.5 mg/mL
Buffer:	Liquid. In Phosphate Buffered Saline (pH 7.4) containing 10 % glycerol.
Storage:	4 °C,-20 °C,-80 °C
Storage Comment:	Can be stored at +4C short term (1-2 weeks). For long term storage, aliquot and store at -20C or -70C. Avoid repeated freezing and thawing cycles.



15% SDS-PAGE (3ug)

SDS-PAGE

Image 1.