

Datasheet for ABIN5855029
CD58 Protein (CD58) (AA 29-215) (His tag)



[Go to Product page](#)

1 Image

Overview

Quantity:	50 µg
Target:	CD58
Protein Characteristics:	AA 29-215
Origin:	Human
Source:	Baculovirus infected Insect Cells
Protein Type:	Recombinant
Purification tag / Conjugate:	This CD58 protein is labelled with His tag.
Application:	SDS-PAGE (SDS)

Product Details

Sequence:	ADPFSQQIYG VVYGNVTFHV PSNVPLKEVL WKKQKDKVAE LENSEFRAFS SFKNRVYLDT VSGSLTIYNL TSSDEDEYEM ESPNITDTMK FFLYVLESLP SPTLTCALTN GSIEVQCMIP EHYNSHRGLI MYSWDCPMEQ CKRNSTSIYF KMENDLPQKI QCTLSNPLFN TTSSIILTTC IPSSGHSRHR HHHHHH
Purity:	> 95 % by SDS - PAGE
Endotoxin Level:	< 1.0 EU per 1ug of protein (determined by LAL method)

Target Details

Target:	CD58
Alternative Name:	CD58 (CD58 Products)
Background:	CD58, also known as lymphocyte function-associated antigen 3 isoform 1, is a cell adhesion

Target Details

molecule expressed on Antigen Presenting Cells (APC), particularly macrophages. It binds to CD2 (LFA-2) on T cells and is important in strengthening the adhesion between the T cells and Professional Antigen Presenting Cells. It is an important regulator of immune cell function which occurs as both surface-associated and soluble forms. It is associated with increased risk for multiple sclerosis. Recombinant human CD58, fused to His-tag at C-terminus, was expressed in insect cell and purified by using conventional chromatography techniques.

Molecular Weight: 22.5kDa (196aa) 28-40kDa (SDS-PAGE under reducing conditions)

NCBI Accession: [NP_001770](#)

UniProt: [P19256](#)

Application Details

Application Notes: Optimal working dilution should be determined by the investigator.

Restrictions: For Research Use only

Handling

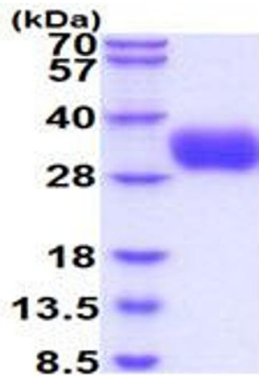
Format: Liquid

Concentration: 1 mg/mL

Buffer: Liquid. In Phosphate Buffered Saline (pH 7.4) containing 10 % glycerol.

Storage: 4 °C,-20 °C,-80 °C

Storage Comment: Can be stored at +4C short term (1-2 weeks). For long term storage, aliquot and store at -20C or -70C. Avoid repeated freezing and thawing cycles.



15% SDS-PAGE (3ug)

SDS-PAGE

Image 1.