

Datasheet for ABIN5855031
LAMP1 Protein (AA 29-382) (His tag)



[Go to Product page](#)

1 Image

Overview

| | |
|-------------------------------|--|
| Quantity: | 50 µg |
| Target: | LAMP1 |
| Protein Characteristics: | AA 29-382 |
| Origin: | Human |
| Source: | Baculovirus infected Insect Cells |
| Protein Type: | Recombinant |
| Purification tag / Conjugate: | This LAMP1 protein is labelled with His tag. |
| Application: | SDS-PAGE (SDS) |

Product Details

| | |
|------------------|--|
| Sequence: | ADPAMFMVKN GNGTACIMAN FSAAFSVNYD TKSGPKNMTF DLPSDATVVL NRSSCGKENT SDPSLVIAFG RGHTLTLNFT RNATRYSVQL MSFVYNLSDT HLFPNASSKE IKTVESITDI RADIDKKYRC VSGTQVHMNN VTVTLHDATI QAYLSNSSFS RGETRCEQDR PSPTTAPPAP PSPSPSPVPK SPSVDKYNVS GTNGTCLLAS MGLQLNLTYE RKDNTTVTRL LNINPNK TSA SGSCGAHLVT LELHSEGTTV LLFQFGMNAS SSRFFLQGIQ LNTILPDARD PAFKAANGSL RALQATVGNS YKCNAAEEHVR VTKAFSVNIF KVVVQAFKVE GGQFGSVEEC LLDENSMHHH HHH |
| Purity: | > 90 % by SDS - PAGE |
| Endotoxin Level: | < 1.0 EU per 1ug of protein (determined by LAL method) |

Target Details

| | |
|---------|-------|
| Target: | LAMP1 |
|---------|-------|

Target Details

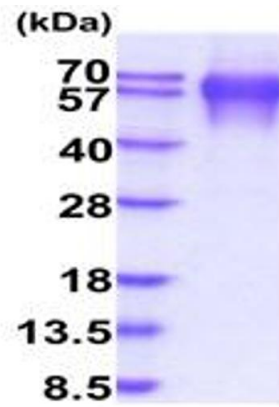
| | |
|-------------------|--|
| Alternative Name: | LAMP1 (LAMP1 Products) |
| Background: | LAMP1, also known as lysosome-associated membrane glycoprotein 1, is a membrane protein that belongs to the LAMP family. It is expressed in the endosome-lysosome membranes of cells, but is also found on the plasma membrane during the activation of NK cells, CD8+ T cells, mast cells, basophils, monocytes, and platelets. A glycoform of LAMP1 is expressed on the surface of activated macrophages where it promotes T cell co-stimulation and a Th1 biased immune response. Recombinant human LAMP1 protein, fused to His-tag at C-terminus, was expressed in insect cell and purified by using conventional chromatography techniques. |
| Molecular Weight: | 39.4kDa (363aa) 57-70KDa (SDS-PAGE under reducing conditions.) |
| NCBI Accession: | NP_005552 |
| UniProt: | P11279 |
| Pathways: | Autophagy |

Application Details

| | |
|--------------------|--|
| Application Notes: | Optimal working dilution should be determined by the investigator. |
| Restrictions: | For Research Use only |

Handling

| | |
|------------------|--|
| Format: | Liquid |
| Concentration: | 1 mg/mL |
| Buffer: | Liquid. In Phosphate Buffered Saline (pH 7.4) containing 10 % glycerol. |
| Storage: | 4 °C,-20 °C,-80 °C |
| Storage Comment: | Can be stored at +4C short term (1-2 weeks). For long term storage, aliquot and store at -20C or -70C. Avoid repeated freezing and thawing cycles. |



15% SDS-PAGE (3ug)

SDS-PAGE

Image 1.