

Datasheet for ABIN5855057

**MCAM Protein (AA 24-559) (His tag)**[Go to Product page](#)**1** Image

## Overview

Quantity:	50 µg
Target:	MCAM
Protein Characteristics:	AA 24-559
Origin:	Human
Source:	Baculovirus infected Insect Cells
Protein Type:	Recombinant
Purification tag / Conjugate:	This MCAM protein is labelled with His tag.
Application:	SDS-PAGE (SDS)

## Product Details

Sequence:	VPGEAEQPAP ELVEVEVGST ALLKCGLSQS QGNLSHVDWF SVHKEKRTL I FRVRQGGQS EPGEYEQRLS LQDRGATLAL TQVTPQDERI FLCQGKRPRS QEYRIQLRVY KAPEEPNIQV NPLGIPVNSK EPEEVATCVG RNYGPIQVI WYKNGRPLKE EKNRVHIQSS QTVESSGLYT LQSILKAQLV KEDKDAQFYC ELNYRLPSGN HMKESREVTV PVFYPTEKVV LEVEPVGMLK EGDRVEIRCL ADGNPPPHFS ISKQNPSTRE AEEETTNDNG VLVLEPARKE HSGRYECQGL DLDTMISLLS EPQELLVNYV SDVRVSPAAP ERQEGSSLTL TCEAESSQDL EFQWLREETG QVLERGPVLQ LHDLKREAGG GYRCVASVPS IPGLNRTQLV NVAIFGPPWM AFKERKVVVK ENMVLNLSCE ASGHRPTIS WNVNGTASEQ DQDPQRVLST LNVLVTPELL ETGVECTASN DLGKNTSILF LELVNLTTLT PDSNTTTGLS TSTASPHTRA NSTSTERKLP EPESRGAAL EHHHHHH
Purity:	> 95 % by SDS - PAGE
Endotoxin Level:	< 1.0 EU per 1ug of protein (determined by LAL method)

## Target Details

---

Target:	MCAM
Alternative Name:	MCAM ( <a href="#">MCAM Products</a> )
Background:	MCAM, also known as cell surface glycoprotein MUC18, is an integral membrane glycoprotein belonging to the immunoglobulin superfamily. It is associated with various carcinomas such as tumor progression, metastasis and may be involved in embryonic neural development. This protein also plays a role in cell adhesion, and in cohesion of the endothelial monolayer at intercellular junctions in vascular tissue. Recombinant human MCAM protein, fused to His-tag at C-terminus, was expressed in insect cell and purified by using conventional chromatography techniques.
Molecular Weight:	61.0kDa (547aa) 70-100kDa (SDS-PAGE under reducing conditions.)
NCBI Accession:	<a href="#">NP_006491</a>
UniProt:	<a href="#">P43121</a>

## Application Details

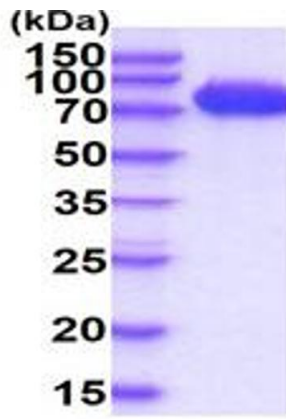
---

Application Notes:	Optimal working dilution should be determined by the investigator.
Restrictions:	For Research Use only

## Handling

---

Format:	Liquid
Concentration:	0.5 mg/mL
Buffer:	Liquid. In Phosphate Buffered Saline ( pH 7.4) containing 10 % glycerol.
Storage:	4 °C,-20 °C,-80 °C
Storage Comment:	Can be stored at +4C short term (1-2 weeks). For long term storage, aliquot and store at -20C or -70C. Avoid repeated freezing and thawing cycles.



15% SDS-PAGE (3ug)

SDS-PAGE

Image 1.