

Datasheet for ABIN5855076  
**CD55 Protein (AA 35-353) (His tag)**



[Go to Product page](#)

1 Image

## Overview

Quantity:	50 µg
Target:	CD55
Protein Characteristics:	AA 35-353
Origin:	Human
Source:	Baculovirus infected Insect Cells
Protein Type:	Recombinant
Purification tag / Conjugate:	This CD55 protein is labelled with His tag.
Application:	SDS-PAGE (SDS)

## Product Details

Sequence:	ADPDCGLPPD VPNAQPALEG RTSFPEDTVI TYKCEESFVK IPGEKDSVIC LKGSQWSDIE EFCNRSCEVP TRLNSASLKQ PYITQNYFPV GTVVEYECRP GYRREPSLSP KLTCCLQNLKW STAVEFCKKK SCPNPGEIRN GQIDVPGGIL FGATISFSCN TGYKLFGSTS SFCLISGSSV QWSDPLPECR EIYCPAPPQI DNGIIQGERD HYGYSQSVTY ACNKGFTMIG EHSIYCTVNN DEGEWSGPPP ECRGKSLTSK VPPTVQKPTT VNVPTTEVSP TSQKTTTKTT TPNAQATRST PVSRTTKHFH ETPPNKGSGT TSHHHHHH
Purity:	> 95 % by SDS - PAGE
Endotoxin Level:	< 1.0 EU per 1ug of protein (determined by LAL method)

## Target Details

Target:	CD55
---------	------

## Target Details

---

Alternative Name:	<a href="#">CD55 (CD55 Products)</a>
Background:	CD55, also known as complement decay-accelerating factor isoform 1, is a membrane protein that attaches to cell membrane via a glycosylphosphatidylinositol (GPI) anchor. It contains four complement control protein repeats (CCPs) with a single N-linked glycan positioned between CCPs 1 and 2. It regulates the complement system on the cell surface. It is used as a receptor by some coxsackieviruses and other enteroviruses. It is broadly distributed among hematopoietic and non-hematopoietic cells. It is a determinant for the Cromer blood group system. It plays a role promotion of tumorigenesis, decrease of complement mediated tumor cell lysis, autocrine loops for cell rescue and evasion of apoptosis, neoangiogenesis, invasiveness, cell motility. Recombinant human CD55, fused to His-tag at C-terminus, was expressed in insect cell and purified by using conventional chromatography techniques.
Molecular Weight:	36kDa (328aa) 40-57kDa (SDS-PAGE under reducing conditions)
NCBI Accession:	<a href="#">NP_000565</a>
UniProt:	<a href="#">P08174</a>
Pathways:	<a href="#">Complement System, Regulation of Leukocyte Mediated Immunity</a>

## Application Details

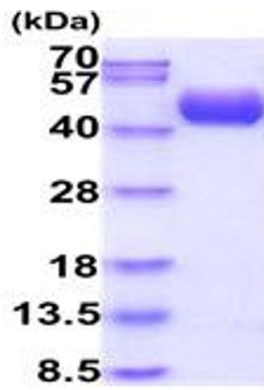
---

Application Notes:	Optimal working dilution should be determined by the investigator.
Restrictions:	For Research Use only

## Handling

---

Format:	Liquid
Concentration:	0.5 mg/mL
Buffer:	Liquid. In Phosphate Buffered Saline ( pH 7.4) containing 10 % glycerol.
Storage:	4 °C,-20 °C,-80 °C
Storage Comment:	Can be stored at +4C short term (1-2 weeks). For long term storage, aliquot and store at -20C or -70C. Avoid repeated freezing and thawing cycles.



15% SDS-PAGE (3ug)

SDS-PAGE

Image 1.