

Datasheet for ABIN5857230

anti-ACTC1 antibody[Go to Product page](#)**1** Image

Overview

Quantity:	100 µL
Target:	ACTC1
Reactivity:	Human, Mouse
Host:	Rabbit
Clonality:	Polyclonal
Conjugate:	This ACTC1 antibody is un-conjugated
Application:	Western Blotting (WB), Immunohistochemistry (IHC), Immunofluorescence (fixed cells) (IF/ICC)

Product Details

Immunogen:	A synthetic peptide of human ACTC1.
Isotype:	IgG
Purification:	Affinity purified

Target Details

Target:	ACTC1
Alternative Name:	ACTC1 (ACTC1 Products)
Molecular Weight:	Calculated MW: 42 kDa Observed MW: 42 kDa
Gene ID:	70
UniProt:	P68032

Target Details

Pathways: [Myometrial Relaxation and Contraction](#)

Application Details

Application Notes: Optimal working dilution should be determined by the investigator.

Restrictions: For Research Use only

Handling

Format: Liquid

Concentration: > 1 mg/mL

Buffer: PBS, pH 7.3, 0.02 % sodium azide.

Preservative: Sodium azide

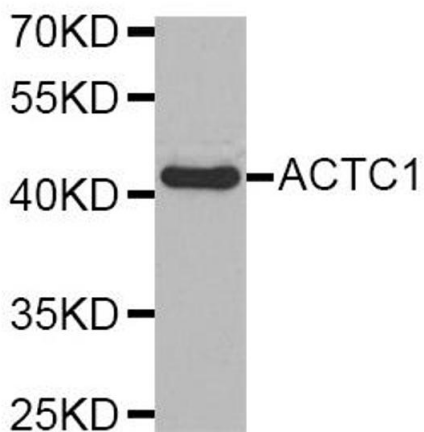
Precaution of Use: This product contains Sodium azide: a POISONOUS AND HAZARDOUS SUBSTANCE which should be handled by trained staff only.

Storage: 4 °C

Storage Comment: Store at 4 °C.

Images

Mouse skeletal muscle



Western Blotting

Image 1. Western blot analysis of extracts of mouse skeletal muscle, using ACTC1 antibody (ABIN5973895).