

Datasheet for ABIN5859876  
**anti-Cyclin E1 antibody (AA 307-410)**



[Go to Product page](#)

5 Images

## Overview

Quantity:	100 µL
Target:	Cyclin E1 (CCNE1)
Binding Specificity:	AA 307-410
Reactivity:	Human, Mouse
Host:	Mouse
Clonality:	Monoclonal
Conjugate:	This Cyclin E1 antibody is un-conjugated
Application:	Please inquire

## Product Details

Immunogen:	Purified recombinant fragment of human CCNE1 (AA: 307-410) expressed in E. Coli.
Isotype:	IgG1
Characteristics:	Isotype: Mouse IgG1

## Target Details

Target:	Cyclin E1 (CCNE1)
Alternative Name:	CCNE1 ( <a href="#">CCNE1 Products</a> )
Molecular Weight:	47 kDa
Gene ID:	898
Pathways:	<a href="#">Cell Division Cycle</a> , <a href="#">Intracellular Steroid Hormone Receptor Signaling Pathway</a> , <a href="#">Nuclear</a>

## Target Details

Hormone Receptor Binding, Mitotic G1-G1/S Phases

## Application Details

Restrictions: For Research Use only

## Handling

Format: Liquid

Buffer: Purified antibody in PBS with 0.05 % sodium azide.

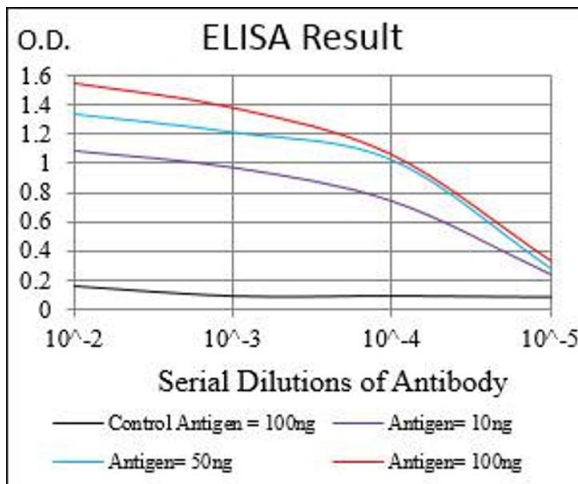
Preservative: Sodium azide

Precaution of Use: This product contains Sodium azide: a POISONOUS AND HAZARDOUS SUBSTANCE which should be handled by trained staff only.

Storage: -20 °C

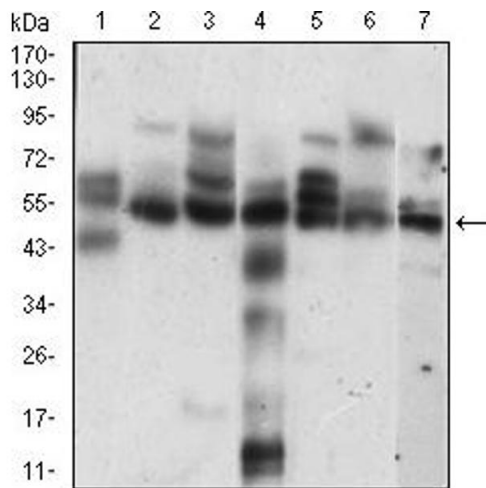
Storage Comment: Aliquot and store at -20 °C. Avoid repeated freeze/thaw cycles.

## Images



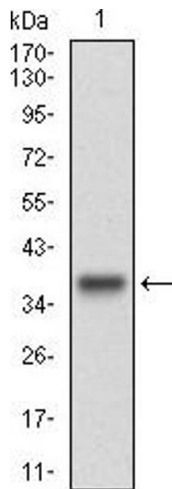
### ELISA

**Image 1.** Fig. 1. Black line: Control Antigen (100 ng)



**Western Blotting**

**Image 2.** Fig. 3. Western blot analysis using CCNE1 mouse mAb against HeLa (1) K562 (2) NIH/3T3 (3) C6 (4) MCF-7 (5) Jurkat (6) A431 (7) cell lysate.



**Western Blotting**

**Image 3.** Fig. 4. Western blot analysis using CCNE1 mAb against human CCNE1 (AA: 307-410) recombinant protein. (Expected MW is 37.5 kDa)

Please check the [product details page](#) for more images. Overall 5 images are available for ABIN5859876.