

Datasheet for ABIN5898878

anti-Keratin Acidic (AE1) antibody (PE)[Go to Product page](#)**1** Image

Overview

Quantity:	0.1 mL
Target:	Keratin Acidic (AE1)
Reactivity:	Human, Rat, Rabbit, Chicken, Mouse, Monkey, Dog, Cat
Host:	Mouse
Clonality:	Monoclonal
Conjugate:	PE
Application:	Immunohistochemistry (IHC), Western Blotting (WB), Flow Cytometry (FACS), Immunofluorescence (fixed cells) (IF/ICC)

Product Details

Immunogen:	Human epidermal keratins.
Isotype:	IgG1

Target Details

Target:	Keratin Acidic (AE1)
Alternative Name:	Acidic Cytokeratin (AE1 Products)

Application Details

Application Notes:	Optimal working dilution should be determined by the investigator.
Restrictions:	For Research Use only

Handling

Format:	Liquid
Buffer:	The reagent is provided in stabilizing phosphate buffered saline (PBS) solution containing 15 mM sodium azide.
Preservative:	Sodium azide
Precaution of Use:	This product contains Sodium azide: a POISONOUS AND HAZARDOUS SUBSTANCE which should be handled by trained staff only.
Storage Comment:	Store in the dark at 2°C to 8°C. Do not freeze. Avoid prolonged exposure to light.

Images

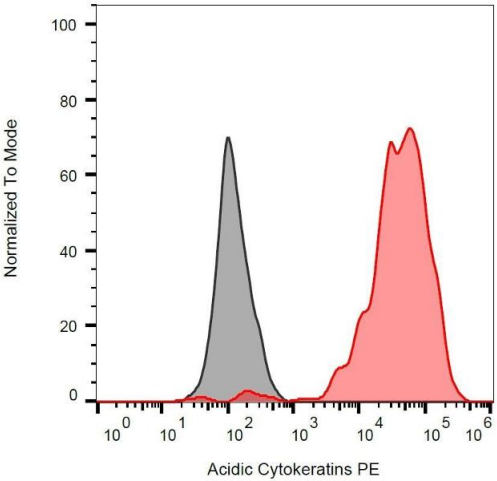


Image 1. Intracellular staining of CaCo-2 cells with anti-acidic cytokeratin PE.