

Datasheet for ABIN5907449  
**anti-KLF2 antibody (AA 251-355)**



[Go to Product page](#)

4 Images

## Overview

Quantity:	100 µL
Target:	KLF2
Binding Specificity:	AA 251-355
Reactivity:	Human, Mouse
Host:	Mouse
Clonality:	Monoclonal
Conjugate:	This KLF2 antibody is un-conjugated
Application:	Please inquire

## Product Details

Immunogen:	Purified recombinant fragment of human KLF2 (AA: 251-355) expressed in E. Coli.
Isotype:	IgG1
Characteristics:	Isotype: Mouse IgG1

## Target Details

Target:	KLF2
Alternative Name:	KLF2 ( <a href="#">KLF2 Products</a> )
Molecular Weight:	37.4 kDa
Gene ID:	10365

## Application Details

Restrictions: For Research Use only

## Handling

Format: Liquid

Buffer: Purified antibody in PBS with 0.05 % sodium azide.

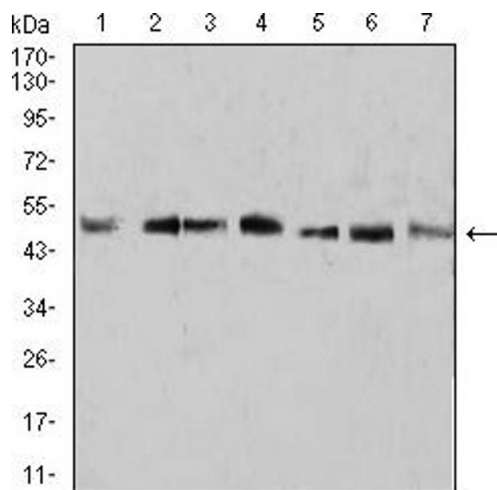
Preservative: Sodium azide

Precaution of Use: This product contains Sodium azide: a POISONOUS AND HAZARDOUS SUBSTANCE which should be handled by trained staff only.

Storage: -20 °C

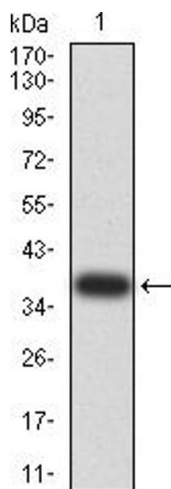
Storage Comment: Aliquot and store at -20 °C. Avoid repeated freeze/thaw cycles.

## Images



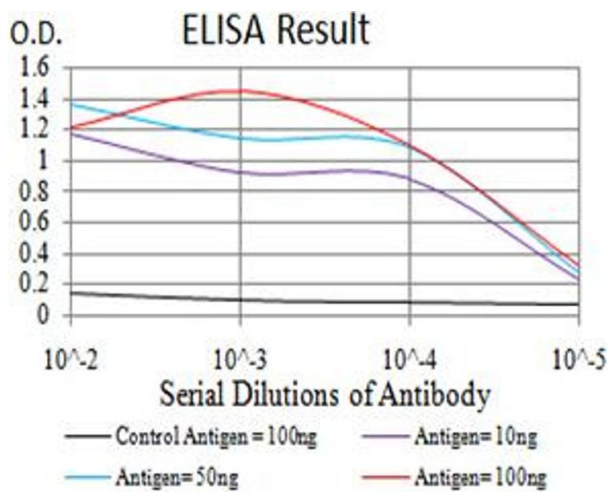
### Western Blotting

Image 1.



### Western Blotting

Image 2.



**ELISA**

**Image 3.** Fig. 1. Figure 1: Black line: Control Antigen (100 ng) Purple line: Antigen (10ng)

Please check the [product details page](#) for more images. Overall 4 images are available for ABIN5907449.