



[Go to Product page](#)

Datasheet for ABIN5911132
anti-SLC4A11 antibody

1 Image

Overview

Quantity:	100 µL
Target:	SLC4A11
Reactivity:	Human, Mouse, Rat, Cow, Dog, Chicken, Horse, Sheep
Host:	Rabbit
Clonality:	Polyclonal
Conjugate:	This SLC4A11 antibody is un-conjugated
Application:	ELISA, Immunohistochemistry (IHC), Immunofluorescence (fixed cells) (IF/ICC)

Product Details

Immunogen:	A synthetic peptide (KLH conjugated) corresponding to human SLC4A11/BTR1
Isotype:	IgG
Purification:	Protein A purified

Target Details

Target:	SLC4A11
Alternative Name:	SLC4A11 (SLC4A11 Products)
Pathways:	Proton Transport

Application Details

Application Notes:	Optimal working dilution should be determined by the investigator.
--------------------	--

Application Details

Restrictions: For Research Use only

Handling

Format: Liquid

Buffer: 0.01 M TBS (pH 7.4) with 1 % BSA, 0.03 % Proclin-300 and 50 % glycerol.

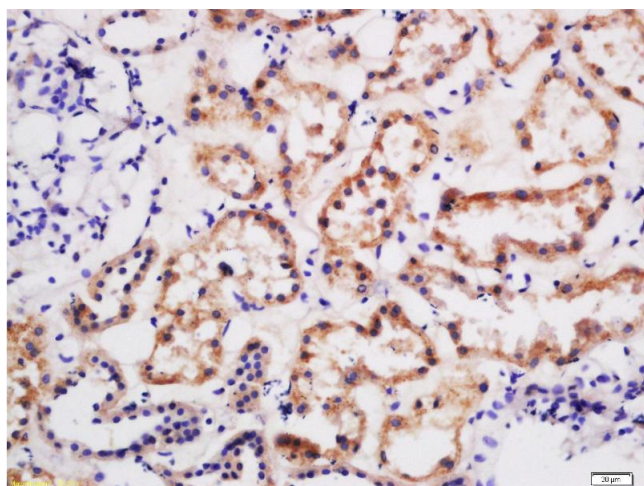
Preservative: ProClin

Precaution of Use: This product contains ProClin: a POISONOUS AND HAZARDOUS SUBSTANCE which should be handled by trained staff only.

Storage: -20 °C

Storage Comment: Shipped at 4°C. Upon receipt, aliquot and store at -20°C. Avoid repeated freeze/thaw cycles.

Images



Immunohistochemistry (Paraffin-embedded Sections)

Image 1. IHC-P analysis of human kidney tissue.