

Datasheet for ABIN5955014
PLGF Protein (AA 19-170) (His tag)[Go to Product page](#)

2 Images

Overview

Quantity:	50 µg
Target:	PLGF (PGF)
Protein Characteristics:	AA 19-170
Origin:	Rhesus Monkey
Source:	HEK-293 Cells
Protein Type:	Recombinant
Biological Activity:	Active
Purification tag / Conjugate:	This PLGF protein is labelled with His tag.

Product Details

Sequence:	AA 19-170
Purity:	>90 % as determined by SDS-PAGE.
Endotoxin Level:	Less than 1.0 EU per µg by the LAL method.

Target Details

Target:	PLGF (PGF)
Alternative Name:	PLGF (PGF Products)
Background:	Placental growth factor (PGF) is also known as vascular endothelial growth factor-related protein, PLGF and PIGF2, is a member of the VEGF (vascular endothelial growth factor) sub-family - a key molecule in angiogenesis and vasculogenesis, in particular during embryogenesis. The main source of PGF during pregnancy is the placental trophoblast. PGF is

Target Details

also expressed in many other tissues, including the villous trophoblast. PGF is activated in angiogenesis and endothelial cell growth, stimulating their proliferation and migration. PlGF2 binds NRP1/neuropilin-1 and NRP2/neuropilin-2 in a heparin-dependent manner. Also promotes cell tumor growth.

Molecular Weight:	19.3 kDa
NCBI Accession:	XP_001096010
Pathways:	VEGFR1 Specific Signals

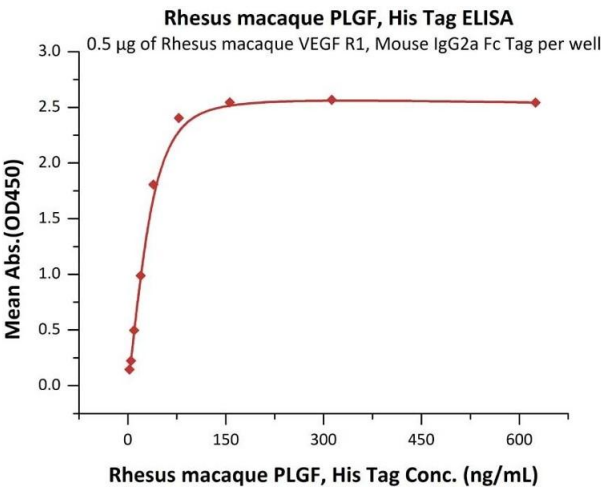
Application Details

Restrictions:	For Research Use only
---------------	-----------------------

Handling

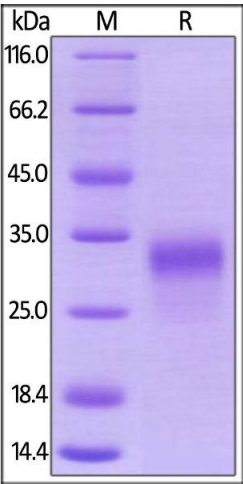
Format:	Lyophilized
Buffer:	100 mM Acetic Acid, pH 2.5
Handling Advice:	Please avoid repeated freeze-thaw cycles.
Storage:	-20 °C

Images



ELISA

Image 1. Immobilized Rhesus macaque VEGF R1, Mouse IgG2a Fc Tag, low endotoxin (ABIN5955010,ABIN6809970) at 5 µg/mL (100 µL/well) can bind Rhesus macaque PLGF, His Tag (ABIN5955014,ABIN6809969) with a linear range of 2-40 ng/mL (QC tested).



SDS-PAGE

Image 2. Rhesus macaque PLGF, His Tag on under reducing (R) condition. The gel was stained overnight with Coomassie Blue. The purity of the protein is greater than 90 % .