

Datasheet for ABIN5957596
anti-RYR2 antibody (Ser2808)[Go to Product page](#)

1 Image

Overview

Quantity:	200 µL
Target:	RYR2
Binding Specificity:	Ser2808
Reactivity:	Human, Mouse, Rat
Host:	Rabbit
Clonality:	Polyclonal
Conjugate:	This RYR2 antibody is un-conjugated
Application:	Western Blotting (WB), ELISA, Immunofluorescence (IF), Immunohistochemistry (Paraffin-embedded Sections) (IHC (p))

Product Details

Immunogen:	Synthesized peptide derived from human RyR-2 around the non-phosphorylation site of Ser2808.
Isotype:	IgG
Specificity:	ARVC2,ARVD2,Cardiac muscle ryanodine receptor,Cardiac muscle ryanodine receptor-calcium release channel,hRYR-2,ryanodine receptor 2 (cardiac),Ryanodine receptor 2,RyR,RYR-2,RyR2,RYR2,Type 2 ryanodine receptor,VTSIP
Purification:	Affinity purification

Target Details

Target:	RYR2
---------	------

Target Details

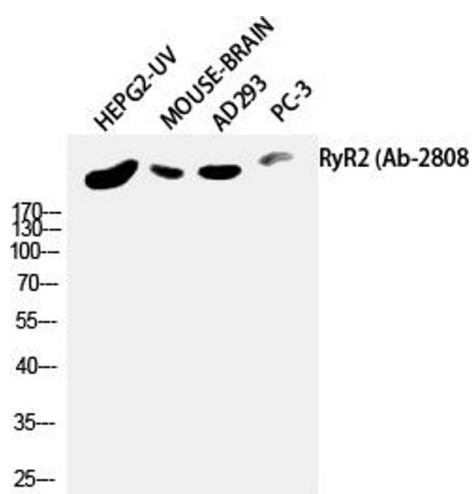
Alternative Name:	RYR2 (RYR2 Products)
Background:	<p>This gene encodes a ryanodine receptor found in cardiac muscle sarcoplasmic reticulum. The encoded protein is one of the components of a calcium channel, composed of a tetramer of the ryanodine receptor proteins and a tetramer of FK506 binding protein 1B proteins, that supplies calcium to cardiac muscle. Mutations in this gene are associated with stress-induced polymorphic ventricular tachycardia and arrhythmogenic right ventricular dysplasia. RYR2 (Ryanodine Receptor 2) is a Protein Coding gene. Diseases associated with RYR2 include Ventricular Tachycardia, Catecholaminergic Polymorphic, 1 and Arrhythmogenic Right Ventricular Dysplasia 2. Among its related pathways are Transport of glucose and other sugars, bile salts and organic acids, metal ions and amine compounds and Cell-type Dependent Selectivity of CCK2R Signaling. GO annotations related to this gene include calcium ion binding and protein kinase binding. An important paralog of this gene is RYR3.</p>
Molecular Weight:	564kDa
Gene ID:	6262
UniProt:	Q92736
Pathways:	Myometrial Relaxation and Contraction

Application Details

Application Notes:	WB 1:500-1:2000, IHC 1:100-1:300, IF 1:200-1:1000, ELISA 1:5000
Restrictions:	For Research Use only

Handling

Format:	Liquid
Concentration:	1 mg/mL
Buffer:	PBS with 0.02 % sodium azide, 0.5 % BSA and 50 % glycerol, pH 7.4
Preservative:	Sodium azide
Precaution of Use:	This product contains Sodium azide: a POISONOUS AND HAZARDOUS SUBSTANCE which should be handled by trained staff only.
Storage:	-20 °C
Storage Comment:	Store at -20°C. Avoid freeze / thaw cycles.



Western Blotting

Image 1.