

Datasheet for ABIN5962657  
**anti-RIP2 antibody (Ser176)**[Go to Product page](#)

## 1 Image

## Overview

Quantity:	200 µL
Target:	RIP2
Binding Specificity:	Ser176
Reactivity:	Human, Mouse
Host:	Rabbit
Clonality:	Polyclonal
Conjugate:	This RIP2 antibody is un-conjugated
Application:	Western Blotting (WB), ELISA, Immunohistochemistry (Paraffin-embedded Sections) (IHC (p))

## Product Details

Immunogen:	Synthesized peptide derived from human RIP2 around the non-phosphorylation site of Ser176.
Isotype:	IgG
Specificity:	CARD 3,CARD carrying kinase,CARD containing ICE associated kinase,CARD containing IL 1 beta ICE kinase,CARD containing IL1 beta ICE kinase,CARD containing interleukin 1 beta converting enzyme (ICE) associated kinase,CARD containing interleukin 1 beta converting enzyme associated kinase,CARD-containing IL-1 beta ICE-kinase,CARD-containing interleukin-1 beta-converting enzyme-associated kinase,CARD3,CARDIAK,CCK,CLARP kinase,GIG 30,GIG30,Growth inhibiting gene 30,Receptor interacting protein (RIP) like interacting caspase like apoptosis regulatory protein (CLARP) kinase,Receptor interacting protein 2,Receptor interacting serine threonine kinase 2,Receptor interacting serine/threonine protein kinase 2,Receptor-interacting protein 2,Receptor-interacting serine/threonine-protein kinase 2,RICK,RIP 2,RIP like interacting CLARP kinase,RIP-2,RIP-like-interacting CLARP kinase,RIPK

## Product Details

2,Ripk2,RIPK2,TNFRSF,Tyrosine-protein kinase RIPK2,UNQ277/PRO314/PRO34092

Purification: Affinity purification

## Target Details

Target: RIP2

Alternative Name: RIP2 ([RIP2 Products](#))

Background: This gene encodes a member of the receptor-interacting protein (RIP) family of serine/threonine protein kinases. The encoded protein contains a C-terminal caspase activation and recruitment domain (CARD), and is a component of signaling complexes in both the innate and adaptive immune pathways. It is a potent activator of NF-kappaB and inducer of apoptosis in response to various stimuli. RIPK2 (Receptor Interacting Serine/Threonine Kinase 2) is a Protein Coding gene. Diseases associated with RIPK2 include Lymphoproliferative Syndrome, X-Linked, 2 and Human Granulocytic Anaplasmosis. Among its related pathways are IL-1 signaling pathway and Nucleotide-binding domain, leucine rich repeat containing receptor (NLR) signaling pathways. GO annotations related to this gene include protein homodimerization activity and protein kinase activity. An important paralog of this gene is RIPK4.

Molecular Weight: 61kDa

Gene ID: 8767

UniProt: [O43353](#)

Pathways: [TCR Signaling](#), [Activation of Innate immune Response](#), [Cellular Response to Molecule of Bacterial Origin](#), [Positive Regulation of Immune Effector Process](#), [Toll-Like Receptors Cascades](#)

## Application Details

Application Notes: WB 1:500-1:2000, IHC 1:100-1:300, ELISA 1:40000

Restrictions: For Research Use only

## Handling

Concentration: 1 mg/mL

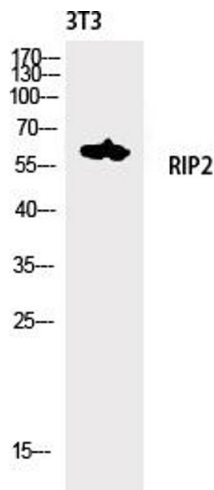
Buffer: PBS with 0.02 % sodium azide, 0.5 % BSA and 50 % glycerol, pH 7.4

Preservative: Sodium azide

Handling

Precaution of Use:	This product contains Sodium azide: a POISONOUS AND HAZARDOUS SUBSTANCE which should be handled by trained staff only.
Storage:	-20 °C
Storage Comment:	Store at -20°C. Avoid freeze / thaw cycles.

Images



Western Blotting

Image 1.