

Datasheet for ABIN596542
anti-MHC Class II antibody (FITC)[Go to Product page](#)

1 Image

Overview

Quantity:	100 µg
Target:	MHC Class II (MHC2)
Reactivity:	Human, Cow, Sheep, Goat
Host:	Mouse
Clonality:	Monoclonal
Conjugate:	This MHC Class II antibody is conjugated to FITC
Application:	Flow Cytometry (FACS), Immunohistochemistry (IHC), Immunohistochemistry (Paraffin-embedded Sections) (IHC (p))

Product Details

Immunogen:	Sheep MHC Class II DQ DR Polymorphic.
Isotype:	IgG2a
Specificity:	Recognizes sheep MHC Class II DQ DR Polymorphic. Species cross-reactivity: Goat, Human, Bovine.
Purification:	Protein G purified

Target Details

Target:	MHC Class II (MHC2)
Alternative Name:	MHC Class II (MHC2 Products)

Application Details

Application Notes:	Approved: Flo (1:10), IHC, IHC-P (1:50)
	Usage: Suitable for use in Flow cytometry: 1:10, 10 µL labels 10 ⁶ cells in 100 µL. The applications listed have been tested for the unconjugated form of this product. Other forms have not been tested.

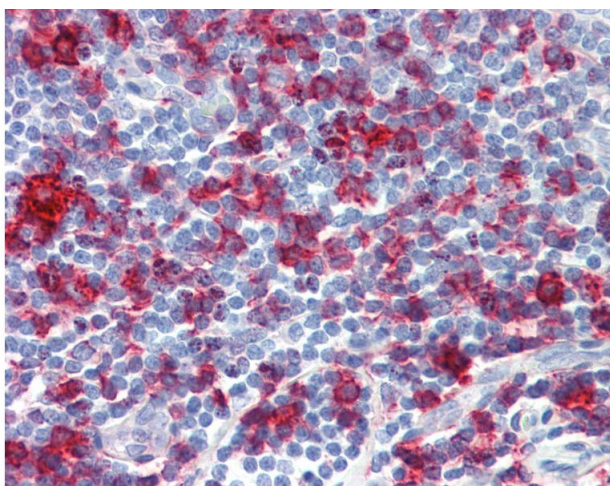
Comment:	Target Species of Antibody: Sheep
----------	-----------------------------------

Restrictions:	For Research Use only
---------------	-----------------------

Handling

Format:	Liquid
Concentration:	Lot specific
Buffer:	PBS, pH 7.4, 1 % BSA, 0.09 % sodium azide
Preservative:	Sodium azide
Precaution of Use:	This product contains Sodium azide: a POISONOUS AND HAZARDOUS SUBSTANCE which should be handled by trained staff only.
Handling Advice:	Avoid repeat freeze-thaw cycles.
Storage:	4 °C, -20 °C
Storage Comment:	Short term: 4°C. Long term: Store at -20°C. Avoid freeze-thaw cycles.

Images



Immunohistochemistry

Image 1. Human Tonsil: Formalin-Fixed, Paraffin-Embedded (FFPE) This image was taken for the unconjugated form of this product. Other forms have not been tested.