



Datasheet for ABIN598771  
**anti-KISS1 antibody (AA 46-146)**



[Go to Product page](#)

3 Images

Overview

Quantity:	100 µg
Target:	KISS1
Binding Specificity:	AA 46-146
Reactivity:	Human
Host:	Mouse
Clonality:	Monoclonal
Conjugate:	This KISS1 antibody is un-conjugated
Application:	Western Blotting (WB), ELISA

Product Details

Immunogen:	KISS1 (NP_002247, 46 a.a. ~ 146 a.a) partial recombinant protein with GST tag. MW of the GST tag alone is 26 KDa.  Type of Immunogen: Recombinant protein
Clone:	1F7
Isotype:	IgG2a kappa
Specificity:	Human KISS1
Purification:	Purified from ascites by Protein A

Target Details

Target:	KISS1
---------	-------

## Target Details

---

Alternative Name:	KISS1 / Kisspeptin / Metastin ( <a href="#">KISS1 Products</a> )
Background:	Name/Gene ID: KISS1  Synonyms: KISS1, HH13, Metastasis-suppressor KiSS-1, Kisspeptin-1, Metastin, KiSS-1, KiSS-1 metastasis-suppressor
Gene ID:	3814
NCBI Accession:	<a href="#">NP_002247</a>
UniProt:	<a href="#">Q15726</a>

## Application Details

---

Application Notes:	Approved: ELISA, WB  Usage: Immunohistochemistry: Formalin-fixed paraffin-embedded sections. Sandwich ELISA: Recombinant protein. Western Blot: Transfected lysate, Recombinant protein.  Not recommended for: IHC-P
Comment:	Target Species of Antibody: Human
Restrictions:	For Research Use only

## Handling

---

Format:	Liquid
Concentration:	Lot specific
Buffer:	PBS, pH 7.4.
Handling Advice:	Aliquot to Avoid repeated freezing and thawing.
Storage:	-20 °C
Storage Comment:	Store at -20°C or lower. Aliquot to avoid freeze-thaw cycles.

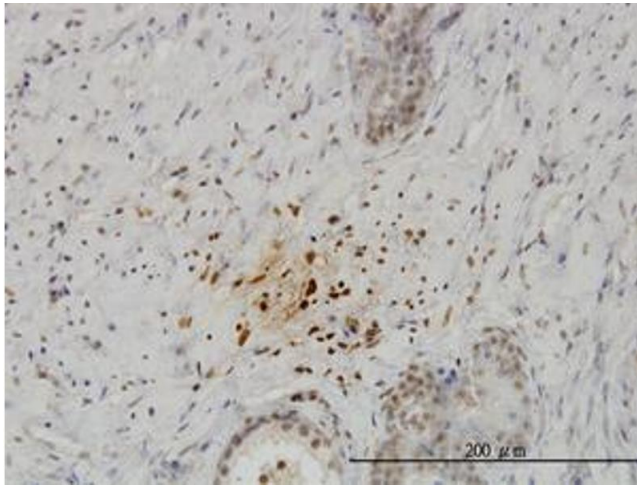
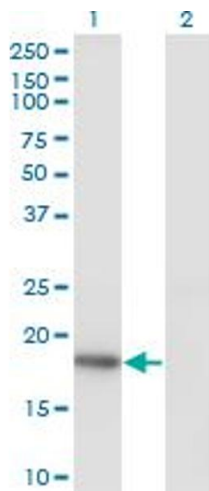
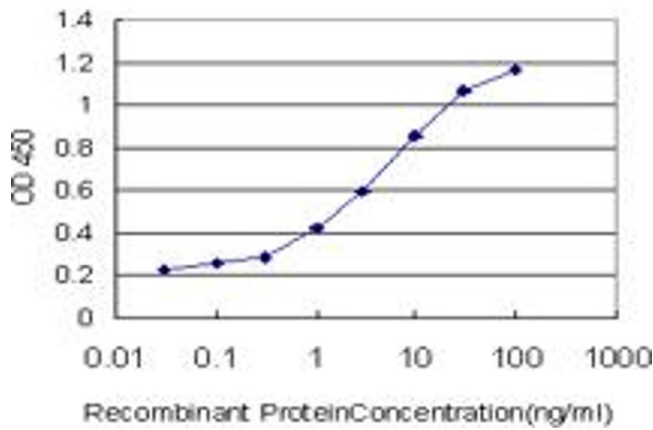


Image 1.



### Western Blotting

Image 2.



### ELISA

Image 3.