



[Go to Product page](#)

Datasheet for ABIN599210
anti-INTS6 antibody (AA 779-888)

2 Images

Overview

Quantity:	100 µg
Target:	INTS6
Binding Specificity:	AA 779-888
Reactivity:	Human
Host:	Mouse
Clonality:	Monoclonal
Conjugate:	This INTS6 antibody is un-conjugated
Application:	Western Blotting (WB), Immunohistochemistry (IHC), ELISA, Immunofluorescence (IF), Immunohistochemistry (Paraffin-embedded Sections) (IHC (p))

Product Details

Immunogen:	DDX26 (NP_036273, 779 a.a. ~ 888 a.a) partial recombinant protein with GST tag. MW of the GST tag alone is 26 KDa. Type of Immunogen: Recombinant protein
Clone:	3D9
Isotype:	IgG1 kappa
Specificity:	Human INTS6
Purification:	Purified from ascites by Protein A

Target Details

Target:	INTS6
Alternative Name:	INTS6 (INTS6 Products)
Background:	Name/Gene ID: INTS6 Synonyms: INTS6, DBI-1, DBI1, DDX26A, HDB, Integrator complex subunit 6, Notch12, INT6, Protein deleted in cancer 1, RNA helicase HDB, Protein DDX26, DDX26, DEAD box protein, DICE1
Gene ID:	26512
NCBI Accession:	NP_036273
UniProt:	Q9UL03

Application Details

Application Notes:	Approved: ELISA, IF (10 µg/mL), IHC, IHC-P (3 µg/mL), WB Usage: Immunohistochemistry: Formalin-fixed paraffin-embedded sections. Western Blot: Recombinant protein.
Comment:	Target Species of Antibody: Human
Restrictions:	For Research Use only

Handling

Format:	Liquid
Concentration:	Lot specific
Buffer:	PBS, pH 7.4
Handling Advice:	Aliquot to Avoid repeated freezing and thawing.
Storage:	-20 °C
Storage Comment:	Store at -20°C or lower. Aliquot to avoid freeze-thaw cycles.

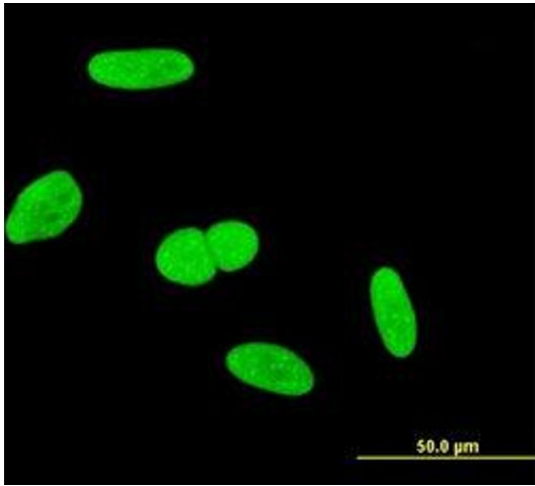


Image 1.

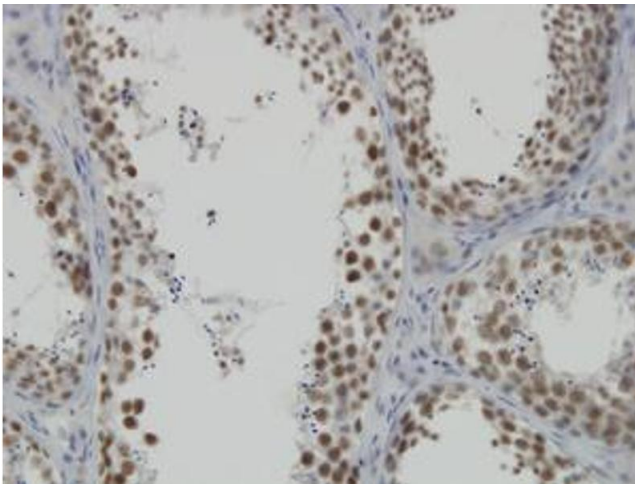


Image 2.