



[Go to Product page](#)

Datasheet for ABIN599347  
**anti-AP2B1 antibody (AA 585-652)**

2 Images

Overview

Quantity:	50 µg
Target:	AP2B1
Binding Specificity:	AA 585-652
Reactivity:	Human
Host:	Mouse
Clonality:	Monoclonal
Conjugate:	This AP2B1 antibody is un-conjugated
Application:	Western Blotting (WB), ELISA, Immunohistochemistry (IHC), Immunohistochemistry (Paraffin-embedded Sections) (IHC (p))

Product Details

Immunogen:	AP2B1 (NP_001273, 585 a.a. ~ 652 a.a) partial recombinant protein with GST tag. MW of the GST tag alone is 26 KDa.  Type of Immunogen: Recombinant protein
Clone:	2D5
Isotype:	IgG1 kappa
Specificity:	Human AP2B1
Purification:	Purified from ascites by Protein A

## Target Details

---

Target:	AP2B1
Alternative Name:	AP2B1 ( <a href="#">AP2B1 Products</a> )
Background:	Name/Gene ID: AP2B1  Synonyms: AP2B1, Adaptin, beta 2 (beta), ADTB2, AP-2 complex subunit beta, AP2-BETA, Beta-adaptin, CLAPB1, AP105B, Beta-2-adaptin
Gene ID:	163
NCBI Accession:	<a href="#">NP_001273</a>
UniProt:	<a href="#">P63010</a>
Pathways:	<a href="#">EGFR Signaling Pathway</a> , <a href="#">Neurotrophin Signaling Pathway</a> , <a href="#">EGFR Downregulation</a>

## Application Details

---

Application Notes:	Approved: ELISA, IHC, IHC-P (3 µg/mL), WB  Usage: Immunohistochemistry: Formalin-fixed paraffin-embedded sections. Sandwich ELISA: Recombinant protein. Western Blot: Recombinant protein.
Comment:	Target Species of Antibody: Human
Restrictions:	For Research Use only

## Handling

---

Format:	Liquid
Concentration:	Lot specific
Buffer:	PBS, pH 7.4
Handling Advice:	Aliquot to Avoid repeated freezing and thawing.
Storage:	-20 °C
Storage Comment:	Store at -20°C or lower. Aliquot to avoid freeze-thaw cycles.

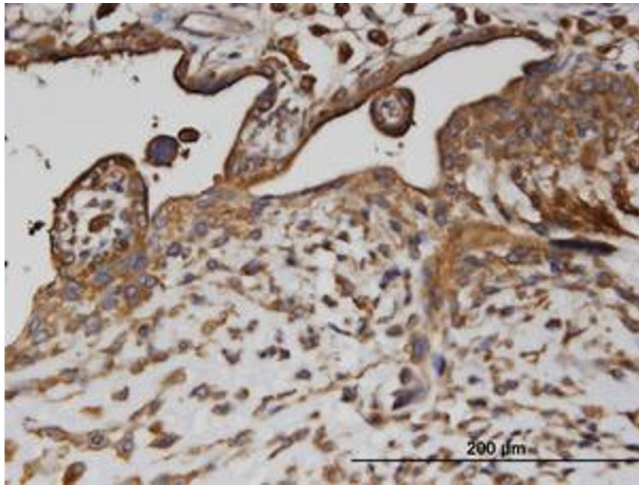
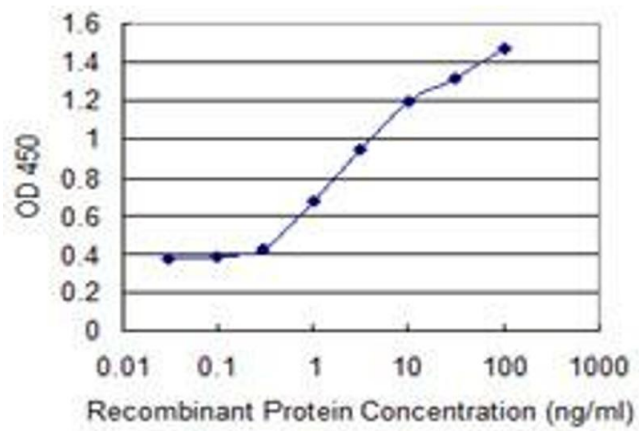


Image 1.



ELISA

Image 2.