



[Go to Product page](#)

Datasheet for ABIN599519
anti-KIF1C antibody (AA 1004-1104)

1 Image

Overview

Quantity:	100 µg
Target:	KIF1C
Binding Specificity:	AA 1004-1104
Reactivity:	Human
Host:	Mouse
Clonality:	Monoclonal
Application:	ELISA, Western Blotting (WB), Immunohistochemistry (IHC), Immunohistochemistry (Paraffin-embedded Sections) (IHC (p))

Product Details

Immunogen:	KIF1C (NP_006603, 1004 a.a. ~ 1104 a.a) partial recombinant protein with GST tag. MW of the GST tag alone is 26 KDa. Type of Immunogen: Recombinant protein
Clone:	1F12
Isotype:	IgG1 kappa
Specificity:	Human KIF1C
Purification:	Purified from ascites by Protein A

Target Details

Target:	KIF1C
---------	-------

Target Details

Alternative Name: [KIF1C \(KIF1C Products\)](#)

Background: Name/Gene ID: KIF1C

Synonyms: KIF1C, Kinesin-like protein KIF1C, Kinesin family member 1C, LTXS1, KIAA0706

Gene ID: 10749

NCBI Accession: [NP_006603](#)

UniProt: [O43896](#)

Application Details

Application Notes: Approved: ELISA, IHC, IHC-P (3 µg/mL), WB

Usage: Immunohistochemistry: Formalin-fixed paraffin-embedded sections. Western Blot: Recombinant protein.

Comment: Target Species of Antibody: Human

Restrictions: For Research Use only

Handling

Format: Liquid

Concentration: Lot specific

Buffer: PBS, pH 7.4.

Handling Advice: Aliquot to Avoid repeated freezing and thawing.

Storage: -20 °C

Storage Comment: Store at -20°C or lower. Aliquot to avoid freeze-thaw cycles.

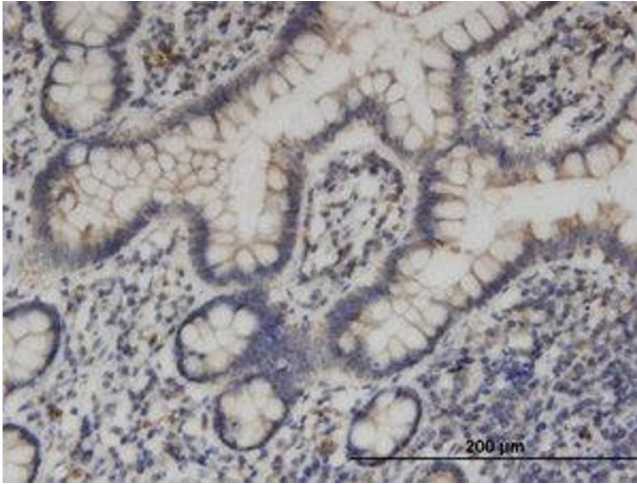


Image 1.