

Datasheet for ABIN5995873
anti-PHOX2B antibody



[Go to Product page](#)

3 Images

Overview

| | |
|--------------|---|
| Quantity: | 100 µL |
| Target: | PHOX2B |
| Reactivity: | Mouse, Human, Rat |
| Host: | Rabbit |
| Clonality: | Polyclonal |
| Conjugate: | This PHOX2B antibody is un-conjugated |
| Application: | Western Blotting (WB), Immunohistochemistry (IHC) |

Product Details

| | |
|---------------|--|
| Immunogen: | The immunogen used to raise this antibody has a length of 314 amino acids. |
| Isotype: | IgG |
| Purification: | Affinity purified |

Target Details

| | |
|-------------------|--|
| Target: | PHOX2B |
| Alternative Name: | PHOX2B (PHOX2B Products) |
| Molecular Weight: | Calculated MW: 31 kDa Observed MW: 32 kDa |
| Gene ID: | 8929 |

Application Details

Application Notes: Optimal working dilution should be determined by the investigator.

Restrictions: For Research Use only

Handling

Format: Liquid

Concentration: 4.47 mg/mL

Buffer: PBS, pH 7.3, 0.02 % sodium azide, 50 % glycerol.

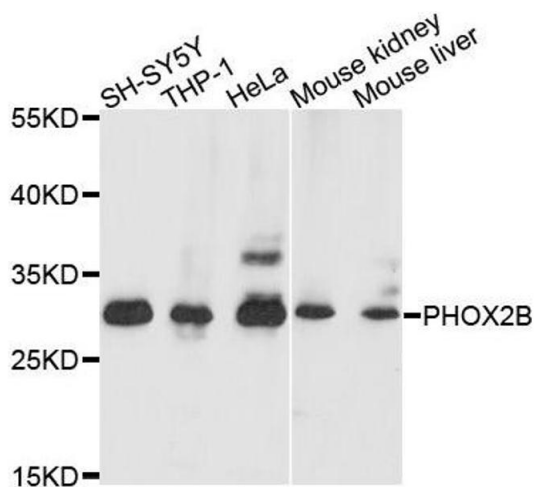
Preservative: Sodium azide

Precaution of Use: This product contains Sodium azide: a POISONOUS AND HAZARDOUS SUBSTANCE which should be handled by trained staff only.

Storage: -20 °C

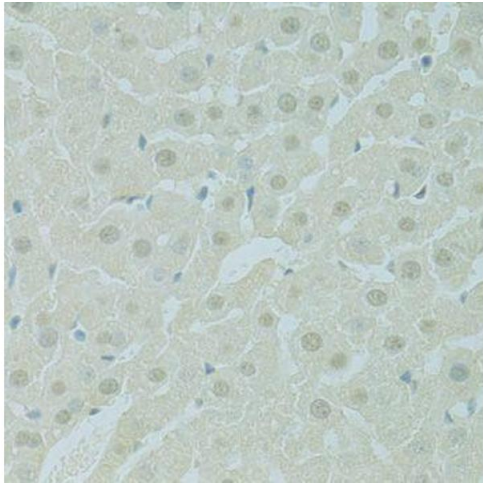
Storage Comment: Aliquot and store at -20 °C. Avoid repeated freeze/thaw cycles.

Images



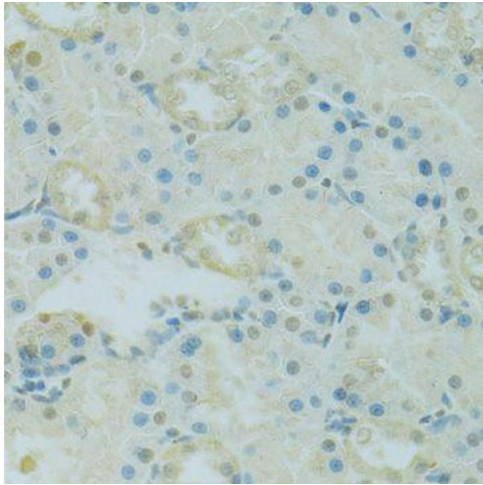
Western Blotting

Image 1. Western blot analysis of extracts of various cell lines, using PHOX2B antibody (ABIN5995873) at 1/1000 dilution.



Immunohistochemistry (Paraffin-embedded Sections)

Image 2. Immunohistochemistry of paraffin-embedded rat liver using PHOX2B antibody (ABIN5995873) at dilution of 1/100 (40x lens).



Immunohistochemistry (Paraffin-embedded Sections)

Image 3. Immunohistochemistry of paraffin-embedded rat kidney using PHOX2B antibody (ABIN5995873) at dilution of 1/100 (40x lens).