

Datasheet for ABIN6000048
anti-BIP1 antibody (C-Term)



[Go to Product page](#)

2 Images

Overview

Quantity:	100 µL
Target:	BIP1
Binding Specificity:	AA 1-250, C-Term
Reactivity:	Human
Host:	Rabbit
Clonality:	Polyclonal
Conjugate:	This BIP1 antibody is un-conjugated
Application:	Western Blotting (WB), Immunofluorescence (fixed cells) (IF/ICC), Immunohistochemistry (IHC), Immunoprecipitation (IP)

Product Details

Immunogen:	CTBP1 (Met1-Phe250)
Purification:	Antigen-specific affinity chromatography followed by Protein A affinity chromatography

Target Details

Target:	BIP1
Alternative Name:	Binding Protein 1 (BIP1 Products)

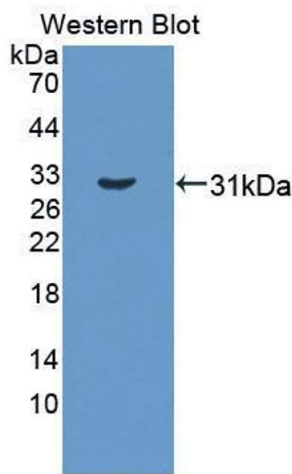
Application Details

Application Notes:	Optimal working dilution should be determined by the investigator.
Restrictions:	For Research Use only

Handling

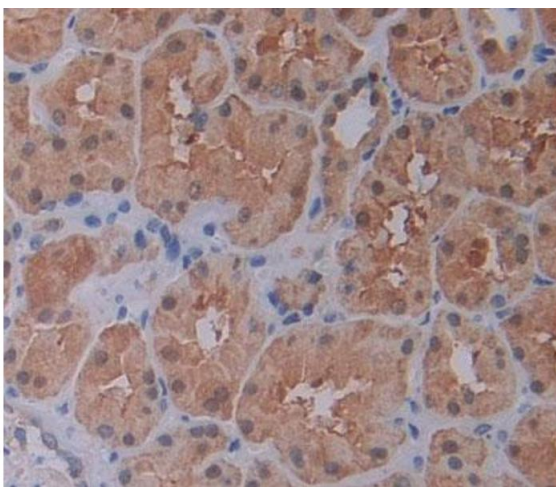
Format:	Liquid
Concentration:	500 µg/mL
Buffer:	PBS, pH 7.4, containing 0.02 % Sodium azide, 50 % glycerol.
Preservative:	Sodium azide
Precaution of Use:	This product contains Sodium azide: a POISONOUS AND HAZARDOUS SUBSTANCE which should be handled by trained staff only.
Storage:	4 °C,-20 °C
Storage Comment:	Store at 4 °C for frequent use. Aliquot and store at -20 °C for one year. Avoid repeated freeze/thaw cycles.

Images



Western Blotting

Image 1. Western blot analysis of the recombinant protein.



Immunohistochemistry (Paraffin-embedded Sections)

Image 2. IHC-P analysis of Kidney tissue, with DAB staining.