



Datasheet for ABIN6001438
anti-MPP6 antibody (AA 34-235)



[Go to Product page](#)

4 Images

Overview

Quantity:	100 µL
Target:	MPP6
Binding Specificity:	AA 34-235
Reactivity:	Mouse
Host:	Rabbit
Clonality:	Polyclonal
Conjugate:	This MPP6 antibody is un-conjugated
Application:	Western Blotting (WB), Immunohistochemistry (IHC), Immunoprecipitation (IP), Immunofluorescence (fixed cells) (IF/ICC)

Product Details

Immunogen:	MPP6 (Val34-Cys235)
Purification:	Antigen-specific affinity chromatography followed by Protein A affinity chromatography

Target Details

Target:	MPP6
Alternative Name:	Membrane Protein, Palmitoylated 6 (MPP6 Products)
Pathways:	Nucleotide Phosphorylation

Application Details

Application Notes: Optimal working dilution should be determined by the investigator.

Restrictions: For Research Use only

Handling

Format: Liquid

Concentration: 500 µg/mL

Buffer: PBS, pH 7.4, containing 0.01 % SKL, 1 mM DTT, 5 % Trehalose and Proclin300.

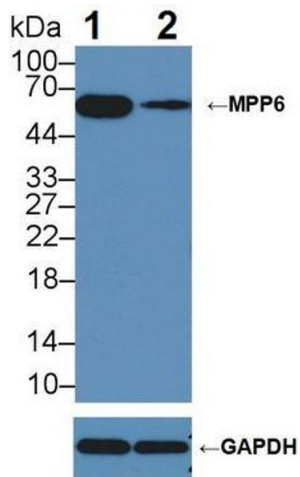
Preservative: Dithiothreitol (DTT), ProClin

Precaution of Use: This product contains ProClin and Dithiothreitol (DTT): POISONOUS AND HAZARDOUS SUBSTANCES which should be handled by trained staff only.

Storage: 4 °C, -20 °C

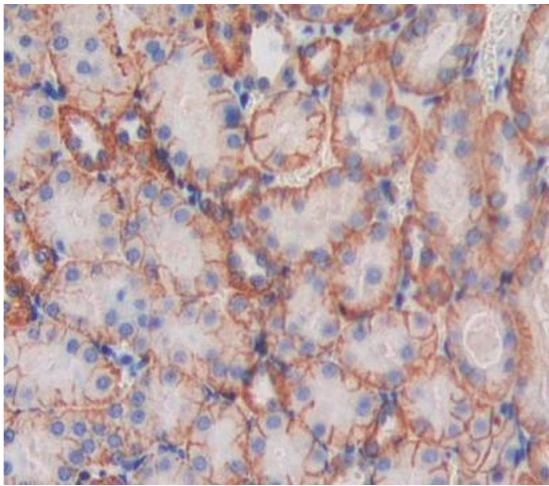
Storage Comment: Store at 4 °C for frequent use. Aliquot and store at -20 °C for one year. Avoid repeated freeze/thaw cycles.

Images



Western Blotting

Image 1. Western blot analysis of (1) Wild-type HepG2 cell lysate, and (2) MPP6 knockout HepG2 cell lysate, using Rabbit Anti-Mouse MPP6 Antibody (5 µg/ml) and HRP-conjugated Goat Anti-Mouse antibody (



Immunohistochemistry (Paraffin-embedded Sections)

Image 2. IHC-P analysis of Kidney tissue, with DAB staining.



Western Blotting

Image 3. Western blot analysis of Human 293T cell lysate, using Rabbit Anti-Mouse MPP6 Antibody (5 µg/ml) and HRP-conjugated Goat Anti-Rabbit antibody (abx400043, 0.2 µg/ml).

Please check the [product details page](#) for more images. Overall 4 images are available for ABIN6001438.