



[Go to Product page](#)

Datasheet for ABIN6002625

anti-Major Basic Protein antibody (AA 105-222)

1 Image

Overview

Quantity:	100 µL
Target:	Major Basic Protein
Binding Specificity:	AA 105-222
Reactivity:	Human
Host:	Mouse
Clonality:	Monoclonal
Conjugate:	This Major Basic Protein antibody is un-conjugated
Application:	Western Blotting (WB), Immunohistochemistry (IHC), Immunoprecipitation (IP), Immunofluorescence (fixed cells) (IF/ICC)

Product Details

Immunogen:	Gln105-Tyr222
Purification:	Protein A + Protein G affinity chromatography

Target Details

Target:	Major Basic Protein
Abstract:	Major Basic Protein Products
UniProt:	P13727

Application Details

Application Notes: Optimal working dilution should be determined by the investigator.

Restrictions: For Research Use only

Handling

Format: Liquid

Concentration: 1 mg/mL

Buffer: 0.01M PBS, pH 7.4, containing 0.05 % Proclin-300, 50 % glycerol.

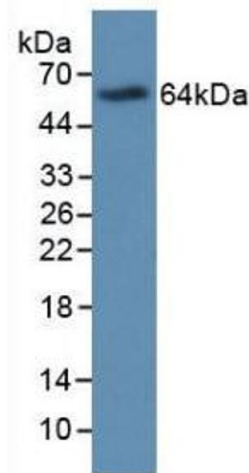
Preservative: ProClin

Precaution of Use: This product contains ProClin: a POISONOUS AND HAZARDOUS SUBSTANCE which should be handled by trained staff only.

Storage: 4 °C,-20 °C

Storage Comment: Store at 4 °C for frequent use. Aliquot and store at -20 °C for one year. Avoid repeated freeze/thaw cycles.

Images



Western Blotting

Image 1. Western blot analysis of recombinant Human MBP.