



[Go to Product page](#)

Datasheet for ABIN604692

anti-RSP01 antibody (N-Term)

3 Images

Overview

| | |
|----------------------|---|
| Quantity: | 0.05 mg |
| Target: | RSP01 |
| Binding Specificity: | N-Term |
| Reactivity: | Human, Rat, Mouse |
| Host: | Rabbit |
| Clonality: | Polyclonal |
| Conjugate: | This RSP01 antibody is un-conjugated |
| Application: | Western Blotting (WB), Immunohistochemistry (IHC), ELISA, Immunohistochemistry (Paraffin-embedded Sections) (IHC (p)) |

Product Details

| | |
|---------------|---|
| Brand: | IHC-plus™ |
| Isotype: | IgG |
| Specificity: | At least three isoforms of RSP01 are known to exist, this antibody will detect the largest and smallest isoforms. RSP01 antibody will not cross-react with other RSP0 family members. |
| Purification: | Immunoaffinity purified |

Target Details

| | |
|-------------------|---|
| Target: | RSP01 |
| Alternative Name: | RSP01 / RSP0 (RSP01 Products) |

Target Details

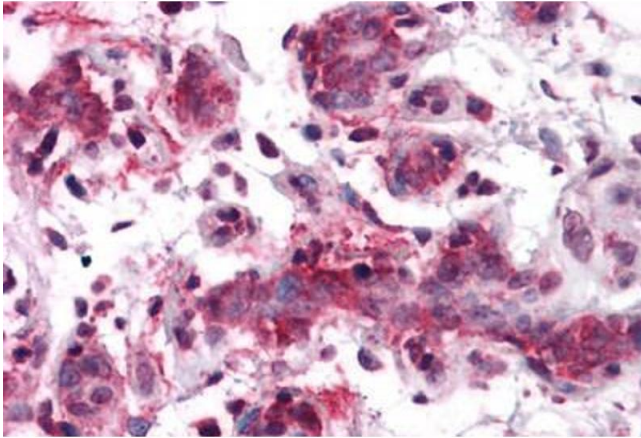
| | |
|-------------|---|
| Background: | Name/Gene ID: RSP01 Synonyms: RSP01, CRISTIN3, HRspo1, R-spondin 1, Roof plate-specific spondin-1, RSPONDIN, RSP0, R-spondin-1, R-spondin1, R-spondin homolog, RP11-566C13.1 |
| Gene ID: | 284654 |
| UniProt: | Q2MKA7 |

Application Details

| | |
|--------------------|---|
| Application Notes: | Approved: ELISA, IHC, IHC-P (5 µg/mL), WB (1 - 2 µg/mL) Usage: RSP01 antibody can be used for detection of RSP01 by Western blot at 1-2 µg/mL. |
| Comment: | Target Species of Antibody: Human |
| Restrictions: | For Research Use only |

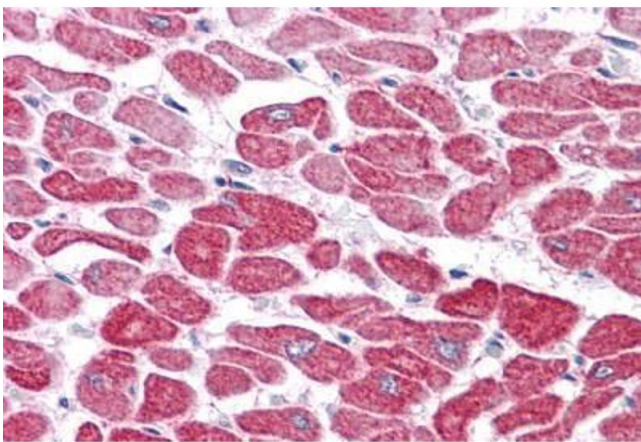
Handling

| | |
|--------------------|--|
| Format: | Liquid |
| Concentration: | Lot specific |
| Buffer: | PBS, 0.02 % sodium azide |
| Preservative: | Sodium azide |
| Precaution of Use: | This product contains Sodium azide: a POISONOUS AND HAZARDOUS SUBSTANCE which should be handled by trained staff only. |
| Handling Advice: | avoid freeze thaw cycles. Store undiluted. |
| Storage: | 4 °C, -20 °C |
| Storage Comment: | Store at 4°C for 3 months and -20°C, stable for up to 1 year. Avoid repeated freeze-thaw cycles. |
| Expiry Date: | 12 months |



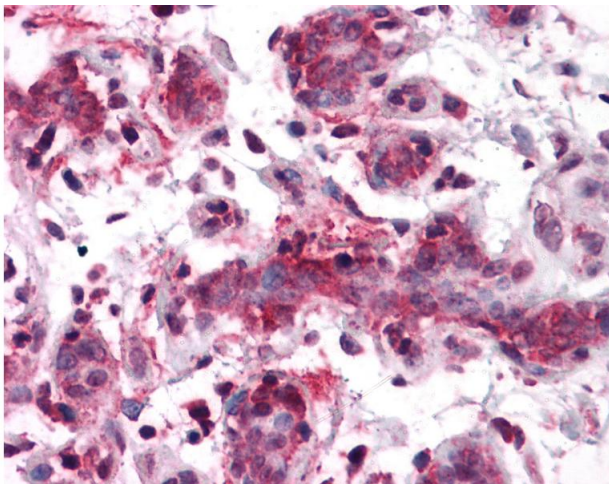
Immunohistochemistry (Formalin-fixed Paraffin-embedded Sections)

Image 1. Human Breast: Formalin-Fixed, Paraffin-Embedded (FFPE)



Immunohistochemistry (Formalin-fixed Paraffin-embedded Sections)

Image 2. Human Heart: Formalin-Fixed, Paraffin-Embedded (FFPE)



Immunohistochemistry

Image 3. Anti-RSP01 antibody IHC of human breast. Immunohistochemistry of formalin-fixed, paraffin-embedded tissue after heat-induced antigen retrieval. Antibody concentration 5 ug/ml.