

Datasheet for ABIN604694
anti-FBLN3 antibody (C-Term)[Go to Product page](#)

2 Images

Overview

Quantity:	0.05 mg
Target:	FBLN3
Binding Specificity:	C-Term
Reactivity:	Human, Mouse, Rat
Host:	Rabbit
Clonality:	Polyclonal
Conjugate:	This FBLN3 antibody is un-conjugated
Application:	Western Blotting (WB), Immunohistochemistry (IHC), ELISA, Immunocytochemistry (ICC), Immunohistochemistry (Paraffin-embedded Sections) (IHC (p))

Product Details

Brand:	IHC-plus™
Isotype:	IgG
Specificity:	At least three isoforms of Fibulin 3 are known to exist. This antibody is predicted to not cross-react with other Fibulin proteins.
Purification:	Immunoaffinity purified

Target Details

Target:	FBLN3
Alternative Name:	Fibulin-3 / EFEMP1 (FBLN3 Products)

Target Details

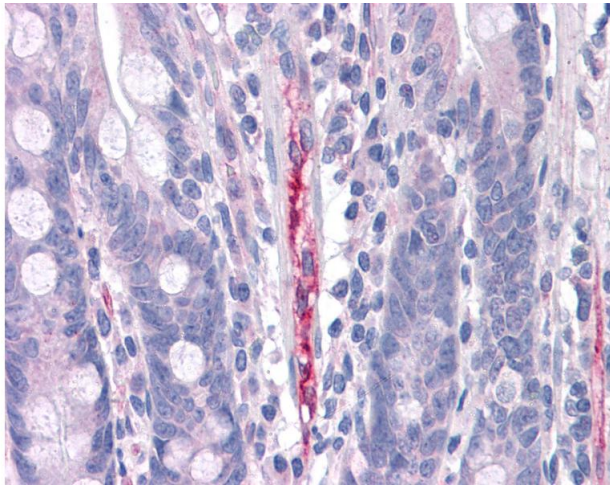
Background:	Name/Gene ID: EFEMP1 Synonyms: EFEMP1, DHRD, Extracellular protein S1-5, FBNL, FBLN3, Fibrillin-like protein, Fibrillin-like, MLVT, S1-5, MTLV, DRAD, FIBL-3, Fibulin-3
Gene ID:	2202
UniProt:	Q12805
Pathways:	EGFR Signaling Pathway

Application Details

Application Notes:	Approved: ELISA, ICC, IHC, IHC-P (5 µg/mL), WB (0.5 - 1 µg/mL) Usage: Fibulin 3 antibody can be used for detection of Fibulin 3 by Western blot at 0.5-1 µg/mL.
Comment:	Target Species of Antibody: Human
Restrictions:	For Research Use only

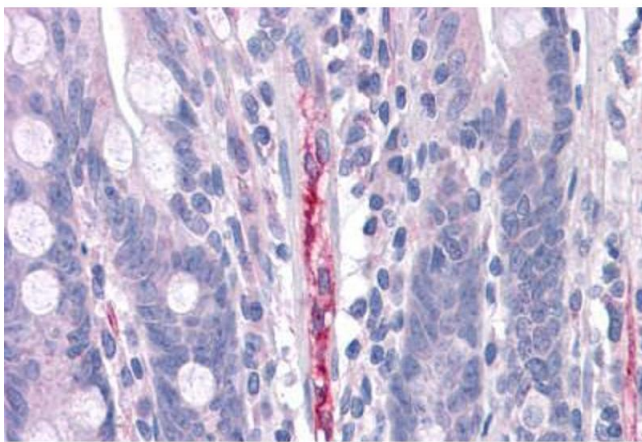
Handling

Format:	Liquid
Concentration:	Lot specific
Buffer:	PBS, 0.02 % sodium azide
Preservative:	Sodium azide
Precaution of Use:	This product contains Sodium azide: a POISONOUS AND HAZARDOUS SUBSTANCE which should be handled by trained staff only.
Handling Advice:	avoid freeze thaw cycles. Store undiluted.
Storage:	4 °C, -20 °C
Storage Comment:	Store at 4°C for 3 months and -20°C, stable for up to 1 year. Avoid repeated freeze-thaw cycles.
Expiry Date:	12 months



Immunohistochemistry

Image 1. Anti-EFEMP1 antibody IHC of human small intestine, capillary. Immunohistochemistry of formalin-fixed, paraffin-embedded tissue after heat-induced antigen retrieval. Antibody concentration 5 ug/ml.



Immunohistochemistry (Formalin-fixed Paraffin-embedded Sections)

Image 2. Human Small Intestine, Capillary: Formalin-Fixed, Paraffin-Embedded (FFPE)